



**Your experts for  
safety, facility  
and equipment  
identification**

Product Catalog

# BradyPrinter S3100 Sign and Label Printer

BradyID.com/s36

Benchmark Printers

S3100



BRADY360  
**5** YEAR WARRANTY

## BradyPrinter S3100 SIGN & LABEL PRINTER

### Walk-up-and-print for ultimate ease of use

Just walk up and print. Literally. The best choice for facility, safety and Lean / 5S labeling

- Intuitive, simple to learn, very approachable. Ideal for multi-user situations, events and centrally located print stations — simple training
- 20-second supply changeover with no waste, calibration or trial and error setup
- Standalone use or PC-Connect use all in one printer
- Automatic label setup with no calibration — the printer “reads” information from your cartridges and automatically sets up the label correctly in the printer or your Brady software

▶ Learn more at  
[BradyID.com/s3100](http://BradyID.com/s3100)



Easy to load  
drop-in  
supplies

#### Printer at-a-glance

- Small footprint
- PC-connect or standalone printing
- Touchscreen label creation
- Single color printing
- Safety and facility ID labels only
- 385 parts, 14 materials

#### Printing supplies

B30-series label rolls ..... page 36  
B30-series print ribbons ..... page 74

Catalog #	Description
S3100W-BWSSFID	BradyPrinter S3100 Printer with Brady Workstation Safety and Facility ID Software Suite*
S3100-W	BradyPrinter S3100 Printer*
120994	Padded rolling case with handle and supplies pockets
B31-WIPER	Extra media wipers (5 per pack)
B31-CCT	Cutting Tool
PCK-6	Cleaning swabs that are pre-soaked in IPA (50 per pack)
<b>Printer and Supplies Starter Kits. Kit contents on page 72.</b>	
S3100W-ARC-KIT	BradyPrinter S3100 Printer w/ Arc Flash Supply Kit*
S3100W-GHS-KIT	BradyPrinter S3100 Printer w/ GHS Supply Kit*
S3100W-SAFE-KIT	BradyPrinter S3100 Printer w/ Safety Supply Kit*
S3100W-LEAN-KIT	BradyPrinter S3100 Printer w/ 5S Visual Workplace Supply Kit*
S3100W-PIPE-KIT	BradyPrinter S3100 Printer w/ Pipe ID Supply Kit*
S3100W-GEN-KIT	BradyPrinter S3100 Printer w/ General Industrial Supply Kit*

\* Printer ships with power cord, USB cable, network card, drivers CD, stylus, cleaning kit, cutter cleaning tool, Quick Start Guide and documentation holder.

Just walk up and print. So simple, your whole team can use it



Pipe marking



GHS labeling



Safety tags



Lean / 5S labeling



Safety signs



Equipment and panel labeling

# BradyPrinter S3100 Sign and Label Printer

BradyID.com/s36

## Printer specifications

Overview	4 in. standalone and PC-connect printer for SFID with Wi-Fi connectivity. Standalone use is ideal for multi-user situations and lean 5S kaizen labeling events. The ultimate in easy and accessible.
Applications	Arc flash labels, equipment labels GHS labels, pipe markers, safety signs, warning labels, lean / 5S labels, panel and enclosure ID, tags barcode labels
Label materials	Extremely aggressive 8-10 year outdoor vinyl with high tack and chemical resistance, plus wash-down material, 10-hr glow in the dark, reflective, magnetic, tags, engraved plate substitute and more.
Label formats	Continuous tapes, pre-printed and blank die-cut labels
Print technology	Thermal transfer
Print resolution	300 dpi
Print speed	3 in./sec.
Media widths	0.5 to 4 in.
Min. label dimension	0.5 in.
Color printing capabilities	Monocolor printing (some pre-printed multi-color supplies also available)
Auto cut-off	Yes
X-Y plotter cutting (cutout shapes / text)	No
PC-connect or standalone operation	Standalone and PC-connect printing
Connectivity options	Standard: USB, Ethernet Optional: Wi-Fi, Wi-Fi Direct
Compatible software	Brady Workstation Apps
Compatible materials	B30 series (all)
Compatible ribbons	B30 series (excluding multi-color panel ribbons)
Calibration required	No (no waste)
Label creation and set-up	Automatic (printer or PC software reads data on chip and automatically sets up label size, color, fonts, etc.)
Ribbon and label roll installation	<b>Labels:</b> Supplied in cartridge, drops into place, 15-second changeover <b>Ribbon:</b> Supplied in cartridge, snaps into place, 5-second changeover
Warranty	5 years

U.S. Patent No. 8,542,155; 8,648,891; 5,823,689; 6,570,602. Additional patents pending.



## Brady Workstation Safety and Facility ID Suite

Brady Workstation has revolutionized how you design and print labels from your PC. When paired with the high-performance printing capabilities of a Brady printer, you get intuitive label set up for simple, efficient and flexible label creation.

### This suite features:

- A collection of applications for creating the custom signs, labels and pipe markers you need to add visual safety guidance to your facility
- The ability to serialize and import your data onto the labels
- Real-time information about the label material installed, enabling easy label set up
- Built-in regulations, standards, pictograms, common phrases, data importation guidance, help functions and more

▶ **Learn more on page 176 or download a free trial at [Workstation.BradyID.com](http://Workstation.BradyID.com)**

## Brady360® 5-year Warranty

We stand behind our products and have strengthened our commitment to you with a **5-year printer warranty standard and free of charge** on our benchtop printer models.\* With our team of certified tech support and repair technicians, you can rest easy knowing you have the support you need, every step of the way.



\*Excludes repairs due to negligence. Excludes Wraptor™, BradyJet and portable models. For full coverage details and restrictions, visit [BradyID.com/brady360](http://BradyID.com/brady360)

Benchtop Printers

S3100

# BradyPrinter i3300 Industrial Label Printer

BradyID.com/s36

Benchmark Printers



## BradyPrinter i3300 INDUSTRIAL LABEL PRINTER

### No waste. More labels. Less effort.

Picture your ideal label printing scenario – the labels and ribbons snap into place, there's no calibration process, you don't have to throw away blank labels before you actually print one. Ideal is now real with the BradyPrinter i3300 Industrial Label Printer. This mid-volume industrial label printer makes your identification projects easy, fast and affordable. Enjoy a variety of time- and money-saving advantages, including:

- **No waste printing:** With print smart technology, you get auto setup and calibration without throwing out blank labels
- **Fast material changeovers:** Foolproof drop-in label rolls and ribbons snap into place for 20-second material changeovers
- **Full-facility identification:** Complete all of your identification tasks, from wires, panels and products to safety and facility labels, with one convenient and efficient tool

▶ Learn more at [BradyID.com/i3300](http://BradyID.com/i3300)



**Print on the first label or sleeve — even on the smallest labels**

### Printer at-a-glance

- Small footprint
- PC-connect printing
- Single color printing
- Safety, facility, wire and product ID labels
- 300+ parts, 14 materials (for SFID)  
350+ parts, 28 materials (Product and Wire ID)

### Printing supplies

B30- and B33-series label rolls ..... page 36  
B30-series print ribbons ..... page 74

Catalog #	Description
149552	BradyPrinter i3300 w/ Brady Workstation Basic Suite
150643	BradyPrinter i3300 w/ Brady Workstation Safety and Facility ID Suite
150645	BradyPrinter i3300 w/ Brady Workstation GHS App
150640	BradyPrinter i3300 w/ Brady Workstation Product and Wire ID Suite
150642	BradyPrinter i3300 w/ Brady Workstation Laboratory ID Suite
150639	BradyPrinter i3300 w/ Brady Workstation Scan and Print and Scanner
120994	Padded rolling case with handle and supplies pockets
B31-WIPER	Extra media wipers (5 per pack)
B31-CCT	Cutting Tool
PCK-6	Cleaning swabs that are pre-soaked in IPA (50 per pack)

\* Printer ships with cleaning kit, cutter cleaning tool, power cord, product CD, Quick Start Guide and USB cable.

### Product and wire ID in addition to safety and facility ID



Industrial labeling



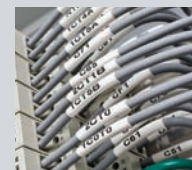
Arc flash labeling



Circuit board labeling



Product ID labels



Wire and cable labels



Raised panel labels and more

i3300

# BradyPrinter i3300 Industrial Label Printer

BradyID.com/s36

## Printer specifications

Overview	4 in. PC-connect-only printer for SFID, die-cut wire ID and product ID labels. Printer is networkable. Does not offer user standalone use but does have extra label types.
Applications	Arc flash labels, equipment labels, GHS labels, pipe markers, safety signs, warning labels, lean / 5S labels, panel and enclosure ID, inside panel and automation ID, wire and cable ID, tags, barcode labels, miscellaneous die-cut labels, circuit board labels, product labels (OEM, laboratory specimen labels)
Label materials	Extremely aggressive 8-10 year outdoor vinyl with high tack and chemical resistance, plus, wash down material, reflective, 10-hour glow-in-the-dark, engraved plate substitute, 33 other materials
Label formats	Continuous material, pre-printed and blank die-cut labels, wire labels and sleeves
Print technology	Thermal transfer
Print resolution	300 dpi
Print speed	up to 4 in./sec.
Media widths	0.5 to 4.25 in.
Min. label dimension	0.25 in.**
Color printing capabilities	Monocolor printing (some pre-printed multi-color supplies also available)
Auto cut-off	Yes
X-Y plotter cutting (cutout shapes / text)	No
PC-connect or standalone operation	PC-connect only
Connectivity options	Standard: USB, Ethernet Optional: Wi-Fi, Wi-Fi Direct
Compatible software	Brady Workstation Apps
Compatible materials	B33 series (all) B30 series (all)
Compatible ribbons	B30 series (excluding multi-color panel ribbons)
Calibration required	No (no waste)
Label creation and set-up	Automatic (printer or PC software reads data on chip and automatically sets up label size, color, fonts, etc.)
Ribbon and label roll installation	<b>Labels:</b> Supplied in cartridge, drops into place, 15-second changeover <b>Ribbon:</b> Supplied in cartridge, snaps into place, 5-second changeover
Warranty	5 years

\*\* Performance at minimum label dimension is dependent on label text and size of print run; Users should test suitability for their application.

U.S. Patent No. 5,823,689; 6,570,602.  
Additional patents pending.



## Brady Workstation Product and Wire ID Suite

Brady Workstation has revolutionized how you design and print labels from your PC. When paired with the high-performance printing capabilities of a Brady printer, you get intuitive label set up for simple, efficient and flexible label creation.

### This suite features:

- A collection of applications for creating product labels, wire and cable markers, panel labels and more
- The ability to serialize and import your data onto the labels
- Specialty label design apps for asset tags, terminal block and patch panel labels
- Real-time information about the label material installed, enabling easy label set up
- Apps feature built-in regulations, standards, pictograms, common phrases, data importation guidance, help functions and more

▶ Learn more on page 176 or download a free trial at [Workstation.BradyID.com](http://Workstation.BradyID.com)

## Brady360® 5-year Warranty

We stand behind our products and have strengthened our commitment to you with a **5-year printer warranty standard and free of charge** on our benchtop printer models.\* With our team of certified tech support and repair technicians, you can rest easy knowing you have the support you need, every step of the way.



\*Excludes repairs due to negligence. Excludes Wraptor™, BradyJet and portable models. For full coverage details and restrictions, visit [BradyID.com/brady360](http://BradyID.com/brady360)

Benchtop Printers

i3300