



**Your experts for
safety, facility
and equipment
identification**

Product Catalog

Security Seals

BradyID.com/s36



Metal Ball Seals

- Supplied with embossed consecutive numbering (factory specified) and the word SEALED
- Available with or without rolled edges to help prevent accidental cuts

Catalog #	Description	Qty.
95197	Metal Ball Seals	100
95198	Rolled Edge Metal Ball Seals	100



Bradylock™ Fastener

- Self-locking heavy duty plastic fastener for Strap-On Markers
- Excellent chemical resistance

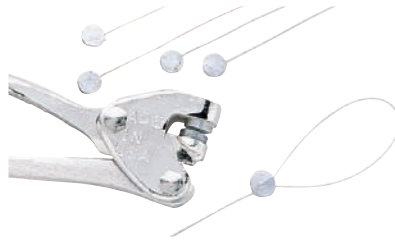
Catalog #	Description	Size
41772	Bradylock Fastener	0.5 in. x 150 ft.



Colored Nylon Ties

- Easily secure valve tags

Catalog #	Description	Length	Qty.
98848	Black	8 in.	100
98850	Green	8 in.	100
98853	Purple	8 in.	100
98851	Natural	8 in.	100
98854	Red	8 in.	100
98855	Yellow	8 in.	100
98849	Blue	8 in.	100



Lead Seals and Press

- 12 in. wire with pre-fitted lead seals fit easily around pipes or valves
- Quickly and permanently crimp your lead seals with Brady's own hand sealer.

Catalog #	Material	Size	Qty.
23301	Copper	12 in. length 31 gauge 7/16 in. dia.	250
23302	Monel Lead	12 in. length 31 gauge 7/16 in. dia.	250
23300	Hand Sealing Press		1



Plastic Truck Seals

- Deters entry, yet easily removed
- Tamper-resistant truck seals are embossed with the word SEAL and are consecutively numbered
- Ships in mats of ten for convenience and accountability; 100 seals total

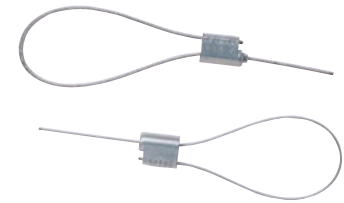
Catalog #	Size	Color	Qty.
95193	7.5 in.	Blue	100
95195	7.5 in.	Red	100
95196	7.5 in.	Yellow	100
133487	7.5 in.	Green	100
133488	7.5 in.	Orange	100



Quik-ApPLY™ Nylon Straps

- Can be used with a variety of tags including valve and lockout tags

Catalog #	Strap Length	Qty
91165	6 in.	10/pk
91166	7 in.	10/pk



Cable Lock Seals

- Heavy steel seals have a steel head with 6 serialized numbers for inventory or tracking
- Factory chooses the starting number

Catalog #	Description	Tensile Strength	Qty.
95166	12 in. x 1/16 in.	727 lbs.	100
95167	12 in. x 3/32 in.	727 lbs.	100



Padlock Plastic Seals

- Made of durable polypropylene with galvanized wire hasps
- Seal body will blush if tampered with
- Heat stamped with SEAL and a 7-digit sequence number (factory specified)

Catalog #	Color	Qty.
95168	Black	100/pk*
95174	White	100/pk*
95173	Red	100/pk*
95172	Orange	100/pk*
95170	Gray	100/pk*
95171	Green	100/pk*
95169	Blue	100/pk*
95175	Yellow	100/pk*

* Minimum order: 5pks



Nylon Fasteners

- Nylon fastener styles available to meet every application

Catalog #	Description	Qty.
81761	8 in. Reusable Beaded Ties	100/pk
81762	7 in. Nylon Fasteners	100/pk



Stainless Steel Wire

- 32 mil stainless steel safety wire
- Recommend to be used with wire twister pliers

Catalog #	Description	Length
15424	Stainless Steel Safety Wire	1,800 ft



Stainless Steel Strapping

- Type 316 Stainless Steel Strapping is highly corrosion and heat resistant

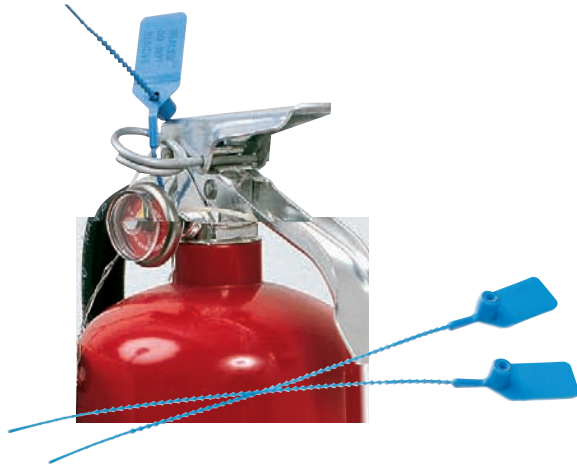
Catalog #	Description	Qty
42331	0.25 in. Stainless Steel Strapping	100 ft.
42332	0.25 in. Stainless Steel Strapping	250 ft.



Banding Heads

- Use with 0.25 in. continuous stainless steel strapping to create secure closures

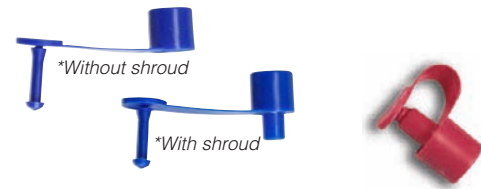
Catalog #	Description	Qty.
90910	Stainless Steel Banding Heads	100



Pull-Tite Seals

- One of the few security seals approved for use by Underwriter's Laboratories (UL) for fire extinguishers and safety doors
- Ideal for use with courier pouches, canisters or cabinets that contain valuables or sensitive documents
- Pull-Tite Seals are embossed SEALED DO NOT REMOVE
- Breaking strength of 10-14 pounds

Catalog #	Size	Color	Qty.
UL approved for fire extinguishers and safety doors			
95150	9 in.	Red	100
95155	9 in.	Yellow	100
95143	9 in.	Light Blue	100
95144	9 in.	Green	100
95141	9 in.	Black	100
Non-UL approved			
133485	9 in.	Orange	100
133482	9 in.	Red	100
133483	9 in.	Yellow	100
133484	9 in.	Light Blue	100
133481	9 in.	Green	100
133486	9 in.	White	100



Ring-Loc Drum™ Seals

- Specifically designed to ensure fiber drum integrity
- Available in two materials:
Nylon which affords greater strength
Polypropylene will blush if tampered
- Hand applied seals can be removed with a simple cutting tool

Catalog #	Description	Color	Qty.
Nylon			
95158	Nylon w/ Shroud	Blue	100
95159	Nylon w/o Shroud	Blue	100
95161	Nylon w/ Shroud	Red	100
95160	Nylon w/o Shroud	Red	100
Polypropylene			
95162	Polypropylene w/ Shroud	Blue	100
95163	Polypropylene w/o Shroud	Blue	100
95164	Polypropylene w/ Shroud	Red	100
95165	Polypropylene w/o Shroud	Red	100