

Specification Sheet

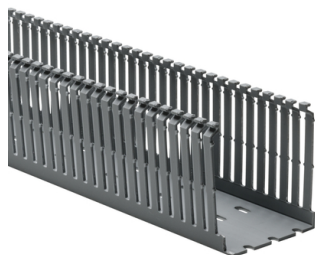
Part Number: 181-00228

Narrow fingers reduce fanning of the wires to the terminal blocks, presenting a neater appearance.

Each finger is provided with a double restriction to hold wires in the bottom portion of the duct, allowing for easier installation.

Mounting holes are uniform in size and are offered every 2 inches to accommodate compact designs and ease installation.

Optional covers snap on and off easily, and are provided with a non-slip lining that insures the covers remain in place during vibration.



High-Density Slotted Wall Wiring Duct, 2.5 x 3", 6 ft Sections, Non- Adhesive, PVC, Gray, 120ft/ctn

Article Number 181-00228

Type SLHD2.5X3

Color Gray (GY)

Quantity Per carton

Product Description HellermannTyton High-Density Slotted Wall Wiring Duct features narrow fingers equaling a 2-to-1 finger ratio compared to standard slotted wiring duct. With the narrow fingers, compact designs and components are more easily accommodated.

Short Description	High-Density Slotted Wall Wiring Duct, 2.5 x 3", 6 ft Sections, Non-Adhesive, PVC, Gray, 120ft/ctn
Global Part Name	SLHD2.5X3-PVC-GY
Length L (Imperial)	6.0
Length L (Metric)	1.83
Fixation Method	Non-Adhesive
Width W (Imperial)	2.5
Width W (Metric)	63.5
Height H (Imperial)	3.07
Height H (Metric)	77.9
Mounting Hole Centers (Imperial)	2.0
Material	Polyvinylchloride (PVC)
Material Shortcut	PVC
Flammability	UL 94 V-0
Halogen Free	No

UV Resistant (Yes/No)	No
Use Conditions	For Indoor Use Only
Operating Temperature	+122°F (+50°C)
Reach Compliant (Article 33)	No
ROHS Compliant	Yes
Certification/Specification	EN 50085-1:2005 + A1:2013 UL CSA EN 50085-2-3_1A
UL Recognized (US)	Yes
Package Quantity (Imperial)	120.0
Package Quantity (Metric)	36.58
Customs Number	3925900000

7930 N. Faulkner Road, Milwaukee, WI 53224

Phone: (800) 537-1512 | Email: corp@htamericas.com

© 2026 HellermannTyton. All Rights Reserved.

[Contact Us](#)

[RoHS/WEEE Compliance](#)

[Privacy Policy](#)

[Cookie Policy](#)

[Terms and Conditions](#)