

The Right Enclosure

right when you need it!



Available with or without
ATEX/IEC Ex Certification
for Global Applications
(CEN Suffix)



EXB Series



GR Series

QUICK RESPONSE PROGRAM

Shipped in 4 working days

EXB Series

ATEX / IEC Ex Certified

| SIZE | CATALOG NUMBER | CATALOG NUMBER |
|--------------|-----------------------|--------------------|
| 8 x 8 x 6 | EXB-886 N34-CENQRP | EXB-886 N34-QRP |
| 10 x 10 x 6 | EXB-10106 N34-CENQRP | EXB-10106 N34-QRP |
| 12 x 12 x 6 | EXB-12126 N34-CENQRP | EXB-12126 N34-QRP |
| 12 x 12 x 8 | EXB-12128 N34-CENQRP | EXB-12128 N34-QRP |
| 14 x 14 x 6 | EXB-14146 N34-CENQRP | EXB-14146 N34-QRP |
| 14 x 14 x 8 | EXB-14148 N34-CENQRP | EXB-14148 N34-QRP |
| 18 x 18 x 8 | EXB-18188 N34-CENQRP | EXB-18188 N34-QRP |
| 18 x 24 x 8 | EXB-18248 N34-CENQRP | EXB-18248 N34-QRP |
| 18 x 24 x 10 | EXB-182410 N34-CENQRP | EXB-182410 N34-QRP |

GR Series

ATEX / IEC Ex Certified

| COVER OPENING DIA. | CATALOG NUMBER | CATALOG NUMBER |
|------------------------|----------------|----------------|
| 3-29/32" | GRB-CENQRP | GRB-QRP |
| 4-11/32" | GRE-CENQRP | GRE-QRP |
| 5-9/32" | GRM-CENQRP | GRM-QRP |
| 7-1/4" | GRK-CENQRP | GRK-QRP |
| 7-7/8" | GRL-CENQRP | GRL-QRP |
| 9-5/8" (7-5/8" deep) | GRH-CENQRP | GRH-QRP |
| 9-5/8" (11" deep) | GRHC-CENQRP | GRHC-QRP |
| 9-5/8" (16-3/16" deep) | GRHA-CENQRP | GRHA-QRP |

NOTES

- For QRP Service, while glass lens option is not available on EXB Series and only BLANK covers are offered with GR Series, all other standard modifications can be provided including machining for conduit and operator openings plus installation of drain and breathers, hinges and mounting pans

QRP ORDER CRITERIA

- No special pricing or discounts will apply (Published Distributor Net Pricing)
- Maximum 10 units per order
- 'Clock starts ticking' only after drawings are received and approved by customer and KILLARK
- Standard ground shipments apply, unless customer provides account number with order for shipping via other means



SEE REVERSE SIDE FOR COMPLETE DIMENSIONAL DATA

KILLARK®

A Division of Hubbell Incorporated (Delaware)

www.hubbell-killark.com

RACO®

BELL®

KILLARK®

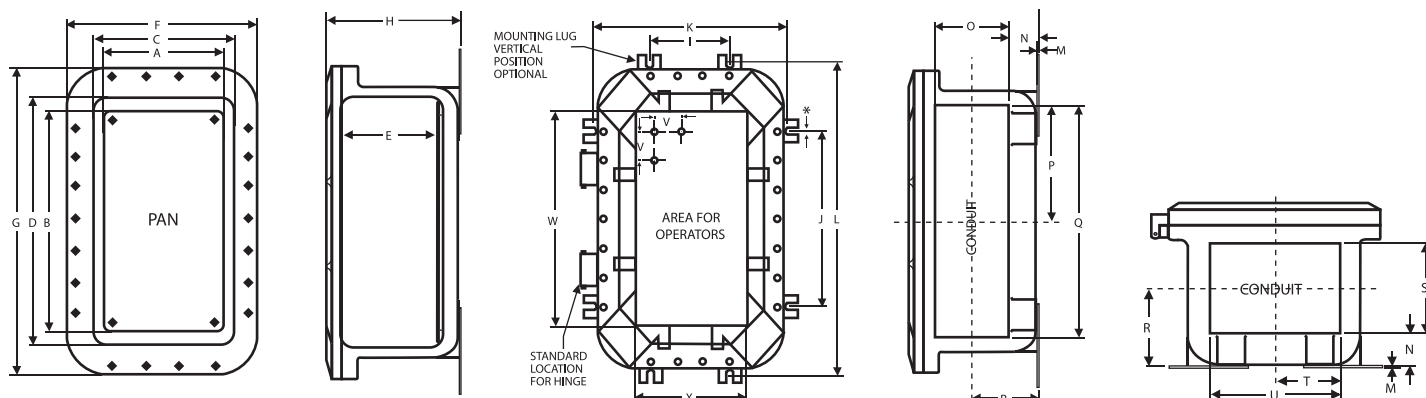
HAWKE®

CHALMIT®



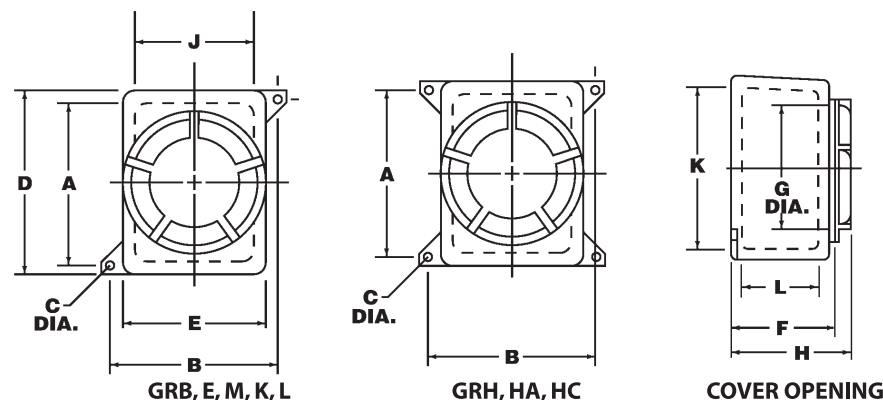
EXB Series Dimensions

| CATALOG NUMBER | INTERNAL DIMENSIONS (INCHES) | | | | | EXTERNAL DIMENSIONS (INCHES) | | | MOUNTING DIMENSIONS (INCHES) | | | | |
|----------------|------------------------------|-------|-----------------------|-------|-------|------------------------------|-------|-------|------------------------------|-------|-------|-------|------|
| | PAN | | AVAILABLE FOR DEVICES | | | F | G | H | I | J | K | L | M |
| | A | B | C | D | E | | | | | | | | |
| EXB-886 N34 | 7 | 7 | 7.59 | 7.59 | 6.06 | 12.32 | 12.32 | 8.09 | N/A | 6.00 | 9.88 | N/A | 0.19 |
| EXB-10106 N34 | 9 | 9 | 10 | 10 | 6.20 | 15.25 | 15.25 | 8.90 | 4.94 | 4.94 | 12.94 | 12.94 | 0.25 |
| EXB-12126 N34 | 10.5 | 10.5 | 11.5 | 11.5 | 6.00 | 16.38 | 16.38 | 8.69 | 6.94 | 6.94 | 14.94 | 14.94 | 0.25 |
| EXB-12128 N34 | 10.5 | 10.5 | 11.37 | 11.37 | 8.00 | 16.38 | 16.38 | 10.69 | 6.94 | 6.94 | 14.94 | 14.94 | 0.25 |
| EXB-14146 N34 | 13 | 13 | 14 | 14 | 6.20 | 19.25 | 19.25 | 9.40 | 9.00 | 9.00 | 17.00 | 17.00 | 0.25 |
| EXB-14148 N34 | 13 | 13 | 14 | 14 | 8.20 | 19.25 | 19.25 | 11.40 | 9.00 | 9.00 | 17.00 | 17.00 | 0.25 |
| EXB-18188 N34 | 17 | 17 | 18 | 18 | 8.12 | 23.25 | 23.25 | 12.00 | 13.38 | 13.38 | 21.38 | 21.38 | 0.25 |
| EXB-18248 N34 | 16.38 | 22.13 | 17.37 | 23.37 | 8.00 | 22.38 | 28.38 | 11.75 | 13.00 | 19.00 | 21.00 | 27.00 | 0.25 |
| EXB-182410 N34 | 16.38 | 22.13 | 17.23 | 23.23 | 10.00 | 22.38 | 28.38 | 13.75 | 13.00 | 19.00 | 21.25 | 27.00 | 0.25 |



GR Series Dimensions

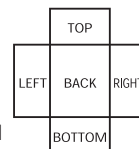
| CAT. NO. | INTERNAL | | | | | | | | | | | |
|----------|----------|---------|-------|----------|---------|----------|----------|-----------|----------|---------|---------|----------|
| | A | B | C | D | E | F | G | H | I | J | K | L |
| GRB | 4" | 6" | 5/16" | 4-5/8" | 4-5/8" | 4-5/32" | 3-29/32" | 4-9/16" | 4-17/32" | 3-3/4" | 3-3/4" | 2-11/16" |
| GRE | 5-3/4" | 6-1/2" | 5/16" | 6-5/8" | 5-1/2" | 5-1/4" | 4-11/32" | 5-3/4" | 5-23/32" | 4-5/8" | 5-3/4" | 3-9/32" |
| GRM | 5-7/8" | 8-1/8" | 5/16" | 6-7/8" | 6-7/8" | 5-15/16" | 5-9/32" | 6-9/16" | 6-9/16" | 6" | 6" | 4-3/16" |
| GRK | 9-1/8" | 9-5/8" | 5/16" | 9-7/8" | 8-3/8" | 6-17/32" | 7-1/4" | 7-9/32" | 7-3/16" | 7-1/16" | 8-5/16" | 4-1/8" |
| GRL | 9-1/2" | 10-1/2" | 7/16" | 10-1/2" | 8-7/8" | 7-3/16" | 7-7/8" | 7-31/32" | 7-15/16" | 7-5/8" | 9-1/8" | 4-15/16" |
| GRH | 10-3/4" | 12-1/8" | 7/16" | 12" | 11-5/8" | 7-5/8" | 9-5/8" | 8-3/8" | 8-5/8" | 9-1/2" | 10-1/2" | 5" |
| GRHA | 8-1/4" | 12-1/8" | 7/16" | 12" | 11-5/8" | 16-3/16" | 9-5/8" | 16-15/16" | 16-3/16" | 9-1/2" | 10-1/2" | 13-9/16" |
| GRHC | 8-1/4" | 12-1/8" | 9/16" | 12-3/16" | 11-5/8" | 11" | 9-5/8" | 11-3/4" | 12" | 9-9/16" | 10-5/8" | 8-7/16" |



Conduit Openings

Ordering Information

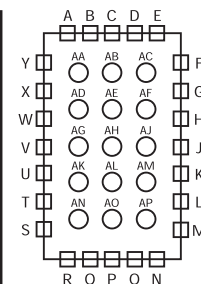
- Select the letter on location chart which indicates conduit opening position desired.
- Select symbol number from chart which indicates conduit opening type and size.
- Combine the conduit location letter, size and type number, and add as a suffix to junction box catalog number.



Example: EXB-14148 N34-C2-M3-P5

Drawing indicates position as looking into open face of box with short side (top) up.

| EXB/GR Symbol Numbers | |
|-----------------------|-------------------------------------|
| Conduit Size | Conduit Openings Drilled and Tapped |
| 1/2" | 1 |
| 3/4" | 2 |
| 1" | 3 |
| 1-1/4" | 4 |
| 1-1/2" | 5 |
| 2" | 6 |
| 2-1/2" | 7 |
| 3" | 8 |
| 3-1/2" | 9 |
| 4" | 0 |
| 5" | 02 |
| 6" | 04 |



KILLARK

A Division of Hubbell Incorporated (Delaware)

www.hubbell-killark.com

RACO®

BELL®

KILLARK®

HAWKE®

CHALMIT®