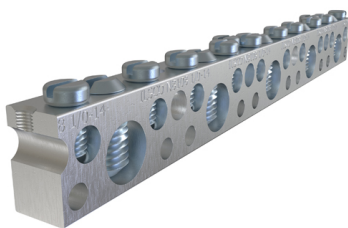


**SKU:** NBAE-0512-2

**UPC:** 0783669005820

**Features & Benefits:**

**Description:** Aluminum Neutral Bar, Dual Rated, Large Conductor Range 1/0-14, Small Range 6-14, 5 Large Ports, 12 Small Ports, 2 Holes, #10 Bolt, UL, CSA



## Specs

### Additional Class Attributes

Connection	Mechanical
Mounting Hole Type	Thru
Number of Conductors	1
Number of Mounting Holes	2
Number of Poles	1
Number of Ports Tap	12

### Dimensions

Dimension G (IN)	1.133
Dimension G (mm)	28.7782
Drive Size Main	NA
Drive Type Main	Slotted
Height (IN)	0.729
Height BX (IN)	2.9
Height (mm)	18.5166
Length (IN)	5.781
Length (mm)	146.8374
Mounting Bolt/Stud Size (mm)	254
Mounting Hole Diameter (IN)	0.203
Mounting Hole Diameter (mm)	5.1562
Mounting Hole Position (IN)	8 & 16
Mounting Hole Spacing (IN)	2.343
Mounting Hole Spacing (mm)	59.5122
Weight (LB)	0.157
Weight BX (LB)	3.294
Width (IN)	0.375
Width BX (IN)	5.5
Width (mm)	9.525

### Material and Finish

Conductor Material	Aluminum
Connector Finish	Tin
Insulation	NA
Material	Aluminum
Wire Binding Hardware Finish	Zinc Clear Trivalent Chromate
Wire Binding Hardware Material	Steel

## Additional Technical Specifications

Conductor Type	Solid
----------------	-------

## Bolt and Screw Sizes

Mounting Bolt/Stud Size	#10
Number of Wire Binding Screws per Port	1
Wire Binding Screw Size	5/16
Wire Binding Torque	10 - 14 AWG = 15

## General

Bag Quantity	1
Carton Quantity Description	STD PACK QTY 20
Dual Rated	Yes
NEMA Code	S-588-3
UPC Code	78366900582

## Testing Standards

CSA File Number	LR-29601
CSA Standard	C22.2 No. 65-03
Prop65 Compliance	This product is in compliance with Prop65. It is not known to contain any chemicals associated with this regulation
UL Control Number	NA
UL / CULUS Specification	UL 467 Listed
UL File Number	E6207

## Color

Color	Silver
-------	--------

## Conductor Ranges

Conductor Range AL Solid (Secondary, tap, load)	10 Sol - 14 Sol
Conductor Range AL Stranded (Primary, run, main, line)	1/0 Str - 14 Str
Conductor Range AL Stranded (Secondary, tap, load)	6 Str - 14 Str
Conductor Range CU Solid (Primary, run, main, line)	10 Sol - 14 Sol
Conductor Range CU Solid (Secondary, tap, load)	10 Sol - 14 Sol
Conductor Range CU Stranded (Primary, run, main, line)	1/0 Str - 14 Str
Conductor Range CU Stranded (Secondary, tap, load)	6 Str - 14 Str
Conductor Range AL Solid (Primary, run, main, line)	10 Sol - 14 Sol

## Voltage

Voltage Rating	35 kV
----------------	-------