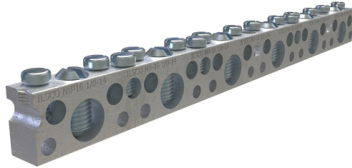


SKU: NBCE-0615-2

UPC: 0783669005882

Features & Benefits:

Description: Copper Neutral Bar, Large Conductor Range 1/0-14, Small Range 6-14, 6 Large Ports, 15 Small Ports, 2 Holes, #10 Bolt, UL, CSA



Specs

Additional Class Attributes

Connection	Mechanical
Mounting Hole Type	Thru
Number of Conductors	1
Number of Mounting Holes	2
Number of Poles	1
Number of Ports Tap	15

Dimensions

Dimension G (IN)	1.133
Dimension G (mm)	28.7782
Drive Size Main	NA
Drive Type Main	Slotted
Height (IN)	0.734
Height BX (IN)	2.8
Height (mm)	18.6436
Length (IN)	6.954
Length (mm)	176.6316
Mounting Bolt/Stud Size (mm)	254
Mounting Hole Diameter (IN)	0.203
Mounting Hole Diameter (mm)	5.1562
Mounting Hole Position (IN)	12 & 20
Mounting Hole Spacing (IN)	2.344
Mounting Hole Spacing (mm)	59.5376
Weight (LB)	0.413
Weight BX (LB)	8.51
Width (IN)	0.375
Width BX (IN)	5.5
Width (mm)	9.525

Material and Finish

Conductor Material	Copper
Connector Finish	Tin
Insulation	NA
Material	Copper
Wire Binding Hardware Finish	Zinc Clear Trivalent Chromate
Wire Binding Hardware Material	Steel

Additional Technical Specifications

Conductor Type	Solid
----------------	-------

Bolt and Screw Sizes

Mounting Bolt/Stud Size	#10
Number of Wire Binding Screws per Port	1
Wire Binding Screw Size	5/16

General

Bag Quantity	1
Carton Quantity Description	STD PACK QTY 20
Dual Rated	No
NEMA Code	S-588-3
UPC Code	78366900588

Testing Standards

CSA File Number	LR-29601
CSA Standard	C22.2 No. 65-03
Prop65 Compliance	This product is in compliance with Prop65. It is not known to contain any chemicals associated with this regulation
ROHS Indicator	IND
UL Control Number	NA
UL / CULUS Specification	UL 467 Listed
UL File Number	E6207

Color

Color	Silver
-------	--------

Conductor Ranges

Conductor Range AL Solid (Secondary, tap, load)	NA
Conductor Range AL Stranded (Primary, run, main, line)	NA
Conductor Range AL Stranded (Secondary, tap, load)	NA
Conductor Range CU Solid (Primary, run, main, line)	10 Sol - 14 Sol
Conductor Range CU Solid (Secondary, tap, load)	10 Sol - 14 Sol
Conductor Range CU Stranded (Primary, run, main, line)	1/0 Str - 14 Str
Conductor Range CU Stranded (Secondary, tap, load)	6 Str - 14 Str
Conductor Range AL Solid (Primary, run, main, line)	NA

Voltage

Voltage Rating	35 kV
----------------	-------