

Cable Connectors

For Armored Cable, Flexible Metal Conduit, Interlocked AC-38 Cables, NM and SE Cable

NEC/CEC:
Listed for Ordinary Locations

Applications

- To ground and secure Armored Cable, Flexible Metal Conduit and Interlocked Metal Clad Cables to boxes and enclosures.
- To secure NM and SE Cables to boxes and enclosures.

Features

- Available with insulated throats.
- Male hub threads — NPS.
- All center stopped.
- Provided with locknuts.

Standard Materials

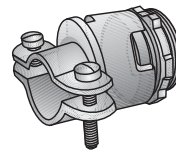
- Malleable iron

Standard Finishes

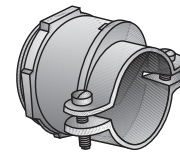
- Zinc electroplated

NEC/CEC Certifications and Compliances

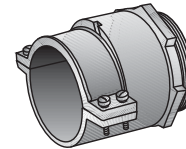
- KC-50, KC-50T, KC-51 UL Listed for metal clad, armored cable, flexible metal conduit, sheathed cable, SE cable: E-11852
- KC-75, KC-75T, KC-76 UL Listed for, armored cable, flexible metal conduit, sheathed cable, SE cable: E-11852
- KC-100, KC-100T, KC-125, KC-125T UL Listed for flexible metal conduit: E-11853
- KC-100, KC-100T, KC-125, KC-125T UL Listed for sheathed cable: E-23237
- KC-100, KC-100T, KC-125, KC-125T UL Listed for SE cable: E-11858
- KC-150 through KC-400 and KC-150T through KC-400T UL Listed for flexible metal conduit: E-11853
- KC-500 and KC-500T: UL and CSA Listing is not applicable
- UL Standard: ANSI/UL 514B
- CSA Standard C22.2 No. 18
- CSA Certified: 009795
- NEMA: FB-1



Type KC-50 — Type KC-76

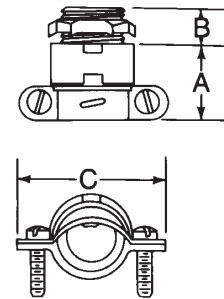


Type KC-100 — Type KC-300



Type KC-350 — Type KC-500

Illustrated Dimensions



Trade Size (Inches)	Dimensions in Millimeters (Inches)			Flex Opening Millimeters (Inches) Min. – Max.	Catalog Number	Insulated Throat Catalog Number
	A	B	C			
1/2	28.70 (1.13)	11.18 (0.44)	47.75 (1.88)	12.70 - 23.11 (0.50 - 0.91)	KC-50	KC-50T
1/2 (3/4 KO)	28.70 (1.13)	11.18 (0.44)	47.75 (1.88)	12.70 - 23.88 (0.50 - 0.94)	KC-51	—
3/4	30.23 (1.19)	12.70 (0.50)	54.10 (2.13)	22.35 - 27.69 (0.88 - 1.09)	KC-75	KC-75T
3/4 (1 KO)	30.23 (1.19)	12.70 (0.50)	54.10 (2.13)	21.34 - 27.69 (0.84 - 1.09)	KC-76	—
1	31.75 (1.25)	14.22 (0.56)	61.98 (2.44)	26.92 - 35.05 (1.06 - 1.38)	KC-100	KC-75T
1-1/4	33.27 (1.31)	14.22 (0.56)	71.37 (2.81)	32.51 - 41.4 (1.28 - 1.63)	KC-125	KC-125T
1-1/2	45.97 (1.81)	19.05 (0.75)	87.38 (3.44)	35.05 - 50.80 (1.38 - 2.00)	KC-150	KC-150T
2	54.10 (2.13)	22.35 (0.88)	107.95 (4.25)	54.10 - 63.50 (2.13 - 2.50)	KC-200	KC-200T
2-1/2	66.80 (2.63)	22.35 (0.88)	127.00 (5.00)	61.98 - 76.20 (2.44 - 3.00)	KC-250	KC-250T
3	77.72 (3.06)	26.92 (1.06)	139.70 (5.50)	74.68 - 88.90 (2.94 - 3.50)	KC-300	KC-300T
3-1/2	90.42 (3.56)	31.75 (1.25)	165.10 (6.50)	94.49 - 101.60 (3.72 - 4.00)	KC-350	KC-350T
4	93.73 (3.69)	31.75 (1.25)	177.80 (7.00)	103.12 - 112.78 (4.06 - 4.44)	KC-400	KC-400T
5	127.00 (5.00)	38.10 (1.50)	212.85 (8.38)	134.87 - 139.7 (5.31 - 5.50)	KC-500	KC-500T

Cable Connectors

For Armored Cable and Flexible Metal Conduit

NEC/CEC:
Listed for Ordinary Locations

Application

- To ground and secure Armored Cable and Flexible Metal Conduit to boxes and enclosures.

Feature

- Male hub threads — NPS
- Available with insulated throat.
- Furnished with locknuts.

Standard Materials

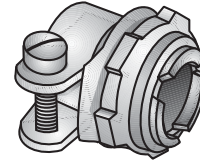
- Malleable iron

Standard Finishes

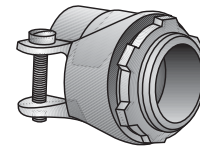
- Zinc electroplated

NEC/CEC Certifications and Compliances

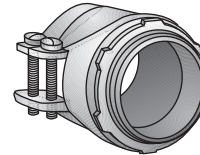
- C-5 through C-8 UL Listed for armored cable: E-11852
- C-8, 24-34 through 24-300 UL Listed for flexible metal conduit: E-11853
- UL Listed flexible metal conduit fittings are suitable for use in Hazardous Location under NEC 501-4(b), Class I, Division 2, and suitable as a grounding means under NEC 350-5.
- CSA Certified for Armored Cable: 009795



Type C-5
End Stopped



Type C-8 — Type 24-125
Center Stopped



Type 24-150 — Type 24-300
Center Stopped

Dimensions in Millimeters (Inches)						
Trade Size (Inches)	Body Length	Thread Length	Max. Width	Flex. Opening	Catalog Number	Insulated Throat Catalog Number
3/8 (1/2 KO)	14.22 (0.56)	11.18 (0.44)	28.70 (1.13)	12.70 - 14.99 (0.50 - 0.59)	C-5	—
1/2	23.88 (0.94)	12.70 (0.50)	39.62 (1.56)	19.81 - 23.88 (0.78 - 0.94)	C-8	C-8T
3/4	28.7 (1.13)	12.70 (0.50)	44.45 (1.75)	23.11 - 27.43 (0.91 - 1.08)	24-34	24-34T
1	30.23 (1.19)	14.22 (0.56)	55.63 (2.19)	32.51 - 36.58 (1.28 - 1.44)	24-100	24-100T
1-1/4	31.75 (1.25)	16.00 (0.63)	63.50 (2.50)	36.58 - 41.4 (1.44 - 1.63)	24-125	24-125T
1-1/2	47.75 (1.88)	17.53 (0.69)	66.80 (2.63)	41.40 - 47.75 (1.63 - 1.88)	24-150	24-150T
2	50.80 (2.00)	19.05 (0.75)	84.07 (3.31)	55.63 - 60.45 (2.19 - 2.38)	24-200	24-200T
2-1/2	52.32 (2.06)	23.88 (0.94)	103.12 (4.06)	68.58 - 74.93 (2.70 - 2.95)	24-250	24-250T
3	57.15 (2.25)	23.88 (0.94)	117.6 (4.63)	79.50 - 88.90 (3.13 - 3.50)	24-300	24-300T

Cable Connectors

Two Screw Clamp and 90° Squeeze Connectors

For Armored Cable and Flexible Metal Conduit

NEC/CEC:
Listed for Ordinary Locations

Application:

- To ground and secure Armored Cable and Flexible Metal Conduit to boxes and enclosures.

Features

- Male hubs - NPS.
- Provided with center stop.
- Available with insulated throats.
- Furnished with locknuts.
- Also suitable for NM and SE cable.

Standard Materials

- Malleable iron

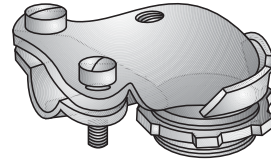
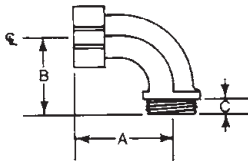
Standard Finishes

- Zinc electroplated

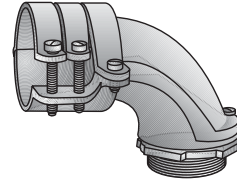
NEC/CEC Certifications and Compliances

- UL Standard: ANSI/UL 514B (1203)
- UL Listed: E-11853
- CSA Standard C22.2 No. 18
- CSA Certified: 009795
- NEMA: FB-1

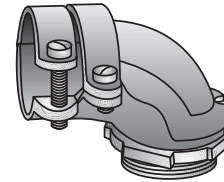
Illustrated Dimensions



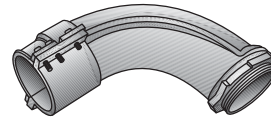
Type ACV-938



Type AC-150 — Type AC-200



Type ACV-50 — Type AC-125



Type AC-250 — Type AC-400

Trade Size (Inches)	Dimensions in Millimeters (Inches)				Flex Opening	Catalog Number	Insulated Throat Catalog Number
	A	B	C				
3/8 (1/2 KO)	33.27 (1.31)	20.57 (0.81)	11.18 (0.44)		9.14 - 16.76 (0.36 - 0.66)	ACV-938	ACV-938T
1/2	44.45 (1.75)	26.92 (1.06)	11.18 (0.44)		19.81 - 24.13 (0.78 - 0.95)	ACV-50	ACV-50T
3/4	45.97 (1.81)	28.70 (1.13)	11.18 (0.44)		23.11 - 25.91 (0.91 - 1.02)	ACV-75	ACV-75T
1	52.32 (2.06)	39.62 (1.56)	14.22 (0.56)		31.75 - 35.05 (1.25 - 1.38)	AC-100	AC-100T
1-1/4	71.37 (2.81)	50.80 (2.00)	14.22 (0.56)		35.81 - 41.4 (1.41 - 1.63)	AC-125	AC-125T
1-1/2	96.77 (3.81)	71.37 (2.81)	14.22 (0.56)		44.45 - 50.8 (1.75 - 2.00)	AC-150	AC-150T
2	120.65 (4.75)	82.55 (3.25)	17.53 (0.69)		55.63 - 42.93 (2.19 - 1.69)	AC-200	AC-200T
2-1/2	158.75 (6.25)	109.47 (4.31)	22.35 (0.88)		69.85 - 76.20 (2.75 - 3.00)	AC-250	AC-250T
3	184.15 (7.25)	130.30 (5.13)	25.40 (1.00)		82.55 - 88.9 (3.25 - 3.50)	AC-300	AC-300T
3-1/2	260.35 (10.25)	196.85 (7.75)	31.75 (1.25)		93.98 - 105.66 (3.70 - 4.16)	AC-350	AC-350T
4	330.20 (13.00)	247.65 (9.75)	31.75 (1.25)		104.39 - 115.82 (4.11 - 4.56)	AC-400	AC-400T

Cable Connectors

Squeeze Connector

For Armored Cable and Flexible Metal Conduit

NEC/CEC:
Listed for Ordinary Locations

Application:

- To ground and secure Armored Cable and Flexible Metal Conduit to boxes and enclosures.

Features

- Male hubs - NPS.
- Provided with center stop.
- Available with insulated throats.
- Furnished with locknuts.
- Also suitable for NM and SE cable.

Standard Materials

- Malleable iron

Standard Finishes

- Zinc electroplated

NEC/CEC Certifications and Compliances

- UL Standard: ANSI/UL 514B (1203)
- UL Listed: E-11852
- CSA Standard C22.2 No. 18
- CSA Certified: 009795
- NEMA: FB-1

Features

- Threaded RMC and IMC to Flexible Metal Conduit
- Female hubs - NPT.

Standard Materials

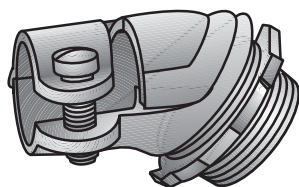
- Malleable iron

Standard Finishes

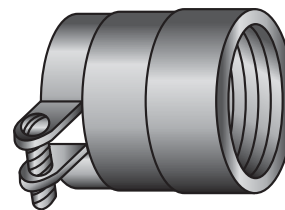
- Zinc plated

NEC/CEC Certifications and Compliances

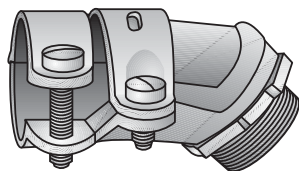
- UL Standard: ANSI/UL 514B
- UL Listed: E-11853



Type AC-38



Type CB



Type AC-50

Trade Size (Inches)	Dimensions in Millimeters (Inches)				Catalog Number	Insulated Throat Catalog Number
	Body Length	Thread Length	Max. Width	Flex. Opening		
3/8 (1/2 KO)	35.05 (1.38)	11.18 (0.44)	31.75 (1.25)	13.46 - 15.49 (0.53 - 0.61)	AC-38	AC-38T
1/2	49.28 (1.94)	11.18 (0.44)	42.93 (1.69)	19.81 - 23.88 (0.78 - 0.94)	AC-50	AC-50T
3/4	54.10 (2.13)	12.70 (0.50)	44.45 (1.75)	23.11 - 26.92 (0.91 - 1.06)	AC-75	AC-75T

Trade Size (Inches)	Dimensions in Millimeters (Inches)			Catalog Number
	Length	Max. Dia.	Flex Range	
1/2	38.1 (1.50)	31.8 (1.25)	19.81 - 23.88 (0.78 - 0.94)	CB-50
3/4	44.5 (1.75)	38.1 (1.50)	23.11 - 27.43 (0.91 - 1.08)	CB-75
1	47.8 (1.88)	47.8 (1.88)	14.99 - 36.58 (0.59 - 1.44)	CB-100

Cable Connectors

Duplex Connector

For Armored Cable

NEC/CEC:
Listed for Ordinary Locations

Application:

- To ground and secure two Armored Cables to boxes and enclosures.

Features

- Male hub threads — NPS.
- Cable stop.
- UL Listed for armored cables 14/2 to 10/2.
- Furnished with locknuts.

Standard Materials

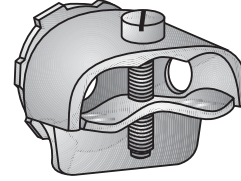
- Malleable iron

Standard Finishes

- Zinc plated

NEC/CEC Certifications and Compliances

- UL Standard: ANSI/UL 514B (1203)
- UL Listed: 11852
- CSA Standard: C22.2 No. 18
- CSA Certified: 009795
- NEMA: FB-1



Type 25-38C

Dimensions in Millimeters (Inches)					
Trade Size (Inches)	Body Length	Thread Length	Max. Width	Opening	Catalog Number
3/8 (1/2 KO)	26.92 (1.06)	11.18 (0.44)	39.62 (1.56)	5.59 - 13.46 (0.22 - 0.53)	25-38C

Cable Connectors

For Armored Cable

NEC/CEC:
Listed for Ordinary Locations

Applications

- To ground and secure armored cable to boxes and enclosures.

Features

- Male hub threads — NPS.
- Cable stop.
- UL Listed for armored cable.
- Furnished with locknuts..

Standard Materials

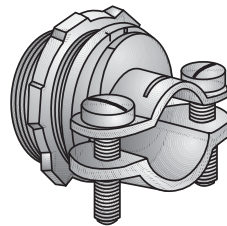
- Malleable iron

Standard Finishes

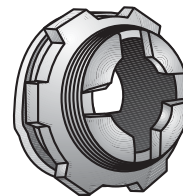
- Zinc electroplated

NEC/CEC Certifications and Compliances

- UL Standard: ANSI/UL 514B
- UL Listed: E-11852
- CSA Standard C22.2 No. 18
- CSA Certified: 009795
- NEMA: FB-1

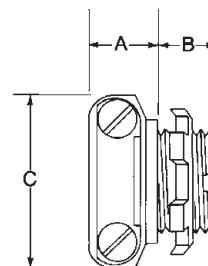


Type C-15L

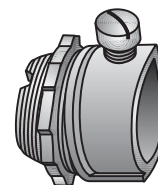


Front View

Illustrated Dimensions



Trade Size (Inches)	Dimensions in Millimeters (Inches)			Cable Opening	Catalog Number
	A	B	C		
3/8 (1/2 KO)	14.22 (0.56)	12.70 (0.50)	35.05 (1.38)	9.65 - 16.00 (0.38 - 0.63)	C-15L



Type C1Z

Trade Size (Inches)	Dimensions in Millimeters (Inches)				Catalog Number
	Body Length	Thread Length	Max. Width	Flex. Opening	
3/8 (1/2 KO)	14.22 (0.56)	10.41 (0.41)	25.40 (1.00)	10.67 - 16.00 (0.42 - 0.63)	C-1Z

Cable Connectors

Aluminum Sheathed For Smooth and Corrugated ALS Cable

COMMERCIAL AND INDUSTRIAL FITTINGS: ARMORED CABLE, METAL CLAD, FLEXIBLE METAL CONDUIT AND NONMETALLIC CONNECTORS

NEC:
Listed for Ordinary Locations

Applications

- To ground and secure Aluminum Sheathed Cable to boxes and enclosures.

Features

- End stopped.
- Male hub threads — NPS.
- Furnished with locknut.

Standard Materials

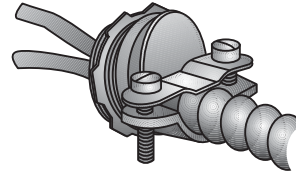
- Malleable iron

Standard Finishes

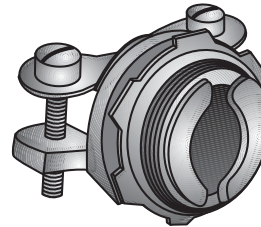
- Zinc electroplated

NEC Certifications and Compliances

- UL Standard: ANSI/UL 514B
- UL Listed: E-11852
- Fed. Spec: W-F-406E
- NEMA: FB-1



Type ALS-50-525



End Stopped

K.O. Size Inches	Dimensions in Millimeters (Inches)			Cable Range Dia. over Armor		Catalog Number
	Length of Clamp	Length of Thread	Width of Clamp	Min.	Max.	
1/2	14.22 (0.56)	11.94 (0.47)	35.05 (1.38)	9.65 (0.38)	13.46 (0.53)	ALS-50-525

Cable Connectors

For Non-Metallic Sheathed Cable

NEC/CEC:
Listed for Ordinary Locations

Applications

- Type C-11LS - to secure non-metallic sheathed cable to boxes and enclosures.
- Type 806 and Type 906 Series - to secure non-metallic sheathed cable, service entrance cable and flexible cords to boxes and enclosures.

Features

- Available with insulated throats.
- Furnished with locknuts.
- Male hub threads — NPS.

Standard Materials

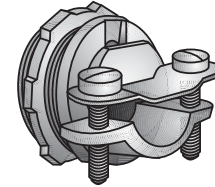
- Malleable iron

Standard Finishes

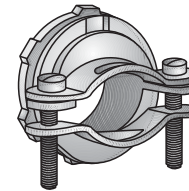
- Zinc electroplated

NEC/CEC Certifications and Compliances

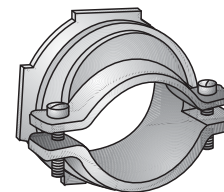
- UL Standard: ANSI/UL 514B
- UL Listed: E-11856
UL Listed for 806, 906Z, 907, 908, 909 for NM and SE Cables
UL Listed: E-11858
UL Listed for 806, 906Z for SE Cable
C-11L - UL Listed E23237 for NM Cable
- CSA Standard C22.2 No. 18
- Fed. Spec: W-F-406E
- NEMA: FB-1



Type C-11LS

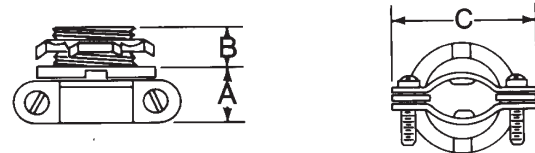


Type 806 — Type 908



Type 909

Illustrated Dimensions



Trade Size (Inches)	Clamp Opening			Dimensions in Millimeters (Inches)			Catalog Number	Insulated Throat Catalog Number
	Min.	Max.	Width	A	B	C		
1/2	4.83 (0.19)	16.00 (0.63)	—	14.22 (0.56)	11.18 (0.44)	35.05 (1.38)	C-11LS ①	C-11LST ①
3/4	9.40 (0.37)	21.34 (0.84)	21.34 (0.84)	17.53 (0.69)	11.18 (0.44)	45.97 (1.81)	806	806T
1	10.67 (0.42)	26.67 (1.05)	26.67 (1.05)	17.53 (0.69)	14.22 (0.56)	52.32 (2.06)	906Z	906T
1-1/4	19.05 (0.75)	34.04 (1.34)	34.04 (1.34)	20.57 (0.81)	14.22 (0.56)	61.98 (2.44)	907	907T
1-1/2	23.11 (0.91)	36.83 (1.45)	39.37 (1.55)	22.35 (0.88)	16.00 (0.63)	69.85 (2.75)	908	908T
2	35.31 (1.39)	51.56 (2.03)	51.56 (2.03)	23.88 (0.94)	19.05 (0.75)	85.85 (3.38)	909	909T

① Longer screw to accommodate extra flexible cables. Not CSA Certified.

Cable Connectors

For Non-Metallic Sheathed Flat Cable

NEC/CEC:
Listed for Ordinary Locations

Applications

- To secure non-metallic sheathed flat cable, SE/SEU flat cable, and other oval (flat) non-metallic cables to boxes and enclosures.

Features

- 2-screw double clamp - open throat type.
- Furnished with locknut.
- Male hub threads — NPS.

Standard Materials

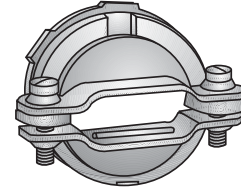
- Malleable iron

Standard Finishes

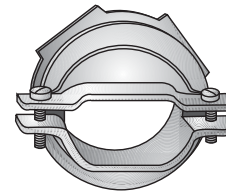
- Zinc electroplated

NEC/CEC Certifications and Compliances

- UL Standard: ANSI/UL 514B
- UL Listed: E-11856
- CSA Standard C22.2 No. 18
- CSA Certified: 11584
- Fed. Spec: W-F-406E
- NEMA: FB-1

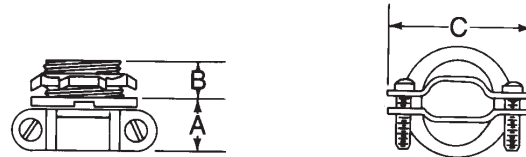


Type 806F — Type 908F



Type 909F

Illustrated Dimensions



Trade Size (Inches)	SEU Cable Range (Braid Neoprene and PVC Jacketed)	Dimensions in Millimeters (Inches)			Clamp Opening Range			Catalog Number
		A	B	C	Min.	Max.	Width	
3/4	3#10 to 3#6	17.53 (0.69)	11.18 (0.44)	45.97 (1.81)	8.38 (0.33)	20.83 (0.82)	20.83 (0.82)	806F ①
1	3#10 to 3#2	17.53 (0.69)	14.22 (0.56)	52.32 (2.06)	7.62 (0.30)	26.92 (1.06)	26.92 (1.06)	906F
1-1/4	3#3 to 3#1/0	20.57 (0.81)	14.22 (0.56)	61.98 (2.44)	12.70 (0.50)	34.29 (1.35)	34.29 (1.35)	907F
1-1/2	3#1/0 to 3#3/0	22.35 (0.88)	16.00 (0.63)	69.85 (2.75)	14.99 (0.59)	28.19 (1.11)	39.62 (1.56)	908F
2	3#2/0 to 3#4/0	23.88 (0.94)	19.05 (0.75)	85.85 (3.38)	19.56 (0.77)	28.96 (1.14)	45.21 (1.78)	909F

① Longer screw to accommodate extra flexible cables. Not CSA Certified.