

Rittal – The System.

Faster – better – everywhere.



SK 3243.300 Blue e+ outlet filter

State: 4/23/2026 (Source: rittal.com/us-en)

ENCLOSURES

POWER DISTRIBUTION

CLIMATE CONTROL

IT INFRASTRUCTURE

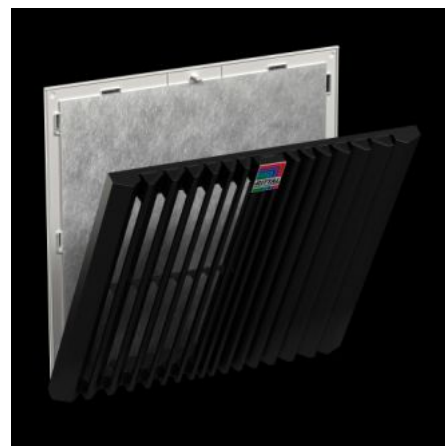
SOFTWARE & SERVICES

FRIEDHELM LOH GROUP



SK 3243.300 - Blue e+ outlet filter

The outlet filter is used in conjunction with the associated filter fan to dissipate lost heat out of the enclosures, to ventilate the enclosure and to protect temperature-sensitive components. This is done via the direct supply of ambient air that must be below the permissible temperature inside the enclosure.



Features

Model No.	SK 3243.300
Version	wall-mounted
Benefits	Easy filter change thanks to a new opening mechanism on the louvre grille Faster assembly on the enclosure due to optimized snap hooks Tool-free mounting
Material	Plastic
Color	RAL 7035
Supply includes	Outlet Filters Pleated filter
Mounting cut-out	Width of opening: 292 mm Cut-out height: 292 mm Width of opening: 11.5 " Cut-out height: 11.5 "
Suitable for Model No.	SK 3243.7xx/3243.9xx/3244.7xx/3244.9xx/3245.9xx

Features

Dimensions	Width: 323 mm Height: 323 mm Depth: 44.7 mm Width: 12.7 " Height: 12.7 " Depth: 1.76 "
Protection category NEMA	Type 12 with chopped fiber filter/pleated filter Type 3, 3R, 4, 4X with chopped fiber filter/pleated filter and hose-proof hood
Protection category IP to IEC 60529	IP 54 with chopped fiber filter/pleated filter IP 55 with pleated filter and absorber mat IP 56 with chopped fiber filter/pleated filter and hose-proof hood
Packaging unit	1 pc(s).
Net weight	0.956 kg
Gross weight	0.956 kg
Customs tariff number	39269097
ETIM 9	EC002513
ETIM 8	EC002513
ECLASS 8.0	27180706
Product description	SK Blue e+ outlet filter, for filter fan 3243.7xx/3243.9xx/3244.7xx/3244.9xx/3245.9xx, WH 323 x 323 mm, RAL 7035

Approvals

Approvals	UL + C-UL - FTTA UR + C-UR (recognized)
-----------	--