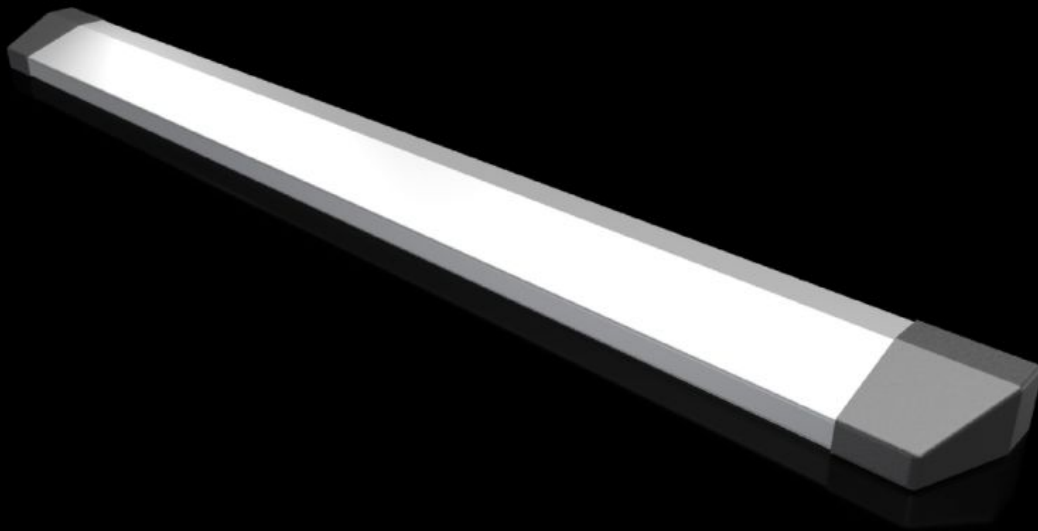


Rittal – The System.

Faster – better – everywhere.



CX 6730.800 CX Aluminum Strip

State: 4/24/2026 (Source: rittal.com/us-en)

ENCLOSURES

POWER DISTRIBUTION

CLIMATE CONTROL

IT INFRASTRUCTURE

SOFTWARE & SERVICES

FRIEDHELM LOH GROUP



CX 6730.800 - CX Aluminum Strip

Prevents slipping of circuit diagrams, etc., and for subsequent attachment to CX middle and upper parts as well as CX one-piece consoles.



Features

Model No.	CX 6730.800
Material	Extruded aluminum section Cover caps: Plastic
Surface finish	Aluminum extruded section: natural anodized
Color	Cover caps: RAL 7016
Supply includes	1 aluminum section 6 plastic covers Drilling template Mounting accessories
Length	1,750 mm 68.9 "
Installation options	Easily cut to length for other dimensions 3 x width 600 mm 2 x width 800 mm 1 x width 1000 mm + 1 x width 600 mm 1 x width 1200 mm 1 x width 1600 mm
Suitable for	CX console system CX One-Piece Console
Packaging unit	1 pc(s).
Net weight	1 kg

Features

Gross weight	1.23 kg
Customs tariff number	76169990
ETIM 9	EC002620
Product description	CX Aluminum strip, L: 1750 mm
