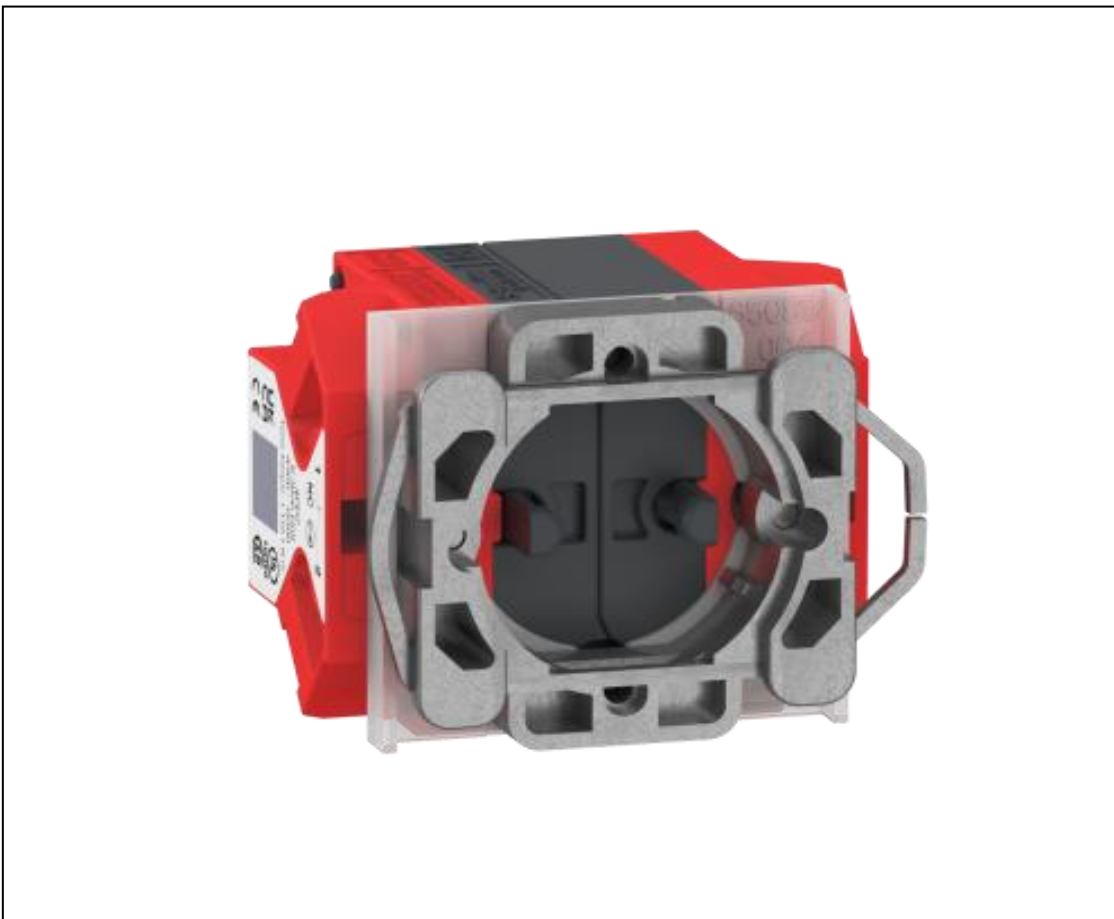


# Product End of Life Instructions

## Harmony ø30mm Emergency Stop Non Illuminated Body



 **Potential disassembly risks**

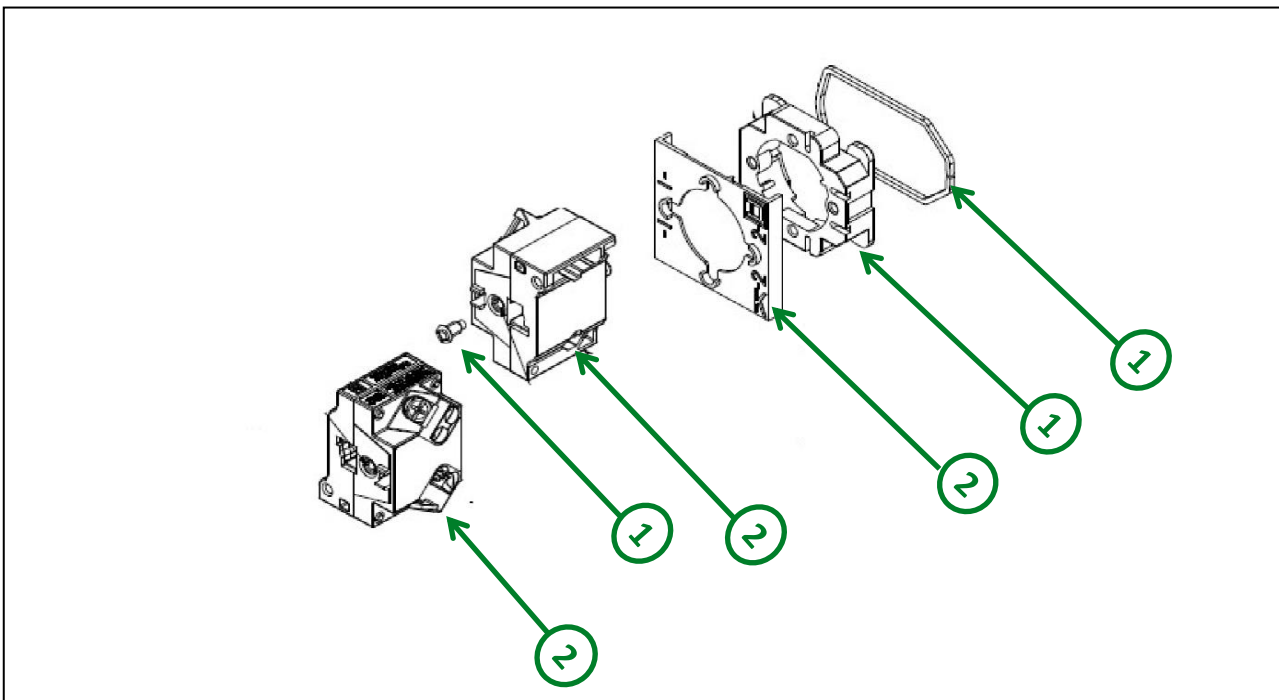
**⚠ CAUTION**

**HAZARD OF PARTS WITH SHARP EDGES**

Apply appropriate personal protective equipment (PPE) during disassembly.

**Failure to follow these instructions can result in injury.**

 **End of Life Instructions**



Recommendation	Number on drawing	Component / Material	Weight (in g)	Comment
To be dismantled	1	Bezel, Screw, Spring, Terminal	54	Metal Parts
To be dismantled	2	Contact Housing, Pusher, Liner	35.43	Plastic Parts

## Product description

Manufacturer identification	Schneider Electric Industries SAS
Brand name	Schneider Electric
Product function	This product is a subset of an emergency stop pushbutton without head which is used to immediately stop any dangerous movements or processes without creating further hazards to persons that can arise from machinery when it cannot be shut down in the usual manner.
Product reference	9001KES18RES2
Total representative product mass	89.5 g
Representative product dimensions	H 53.5mm x L 40.8mm x D 40.4mm
Accessories	Not required any special accessories
Date of information release	03-2025

## Additional information

Legal information	This product family is in the scope of European Union directive 2012/19/EU on Waste Electrical and Electronic Equipment (WEEE). The product family must be disposed according to the legislation of the country. This document is intended for use by end of life recyclers or treatment facilities. It provides the basic information to assure an appropriate end of life treatment for the components and materials of the product.
In case of special transportation: transportation method	No special transportation is required
Recyclability potential	<b>60%</b> The recyclability rate was calculated from the recycling rates of each material making up the product based on REEECY'LAB tool developed by Ecosystem, for components/materials not covered by the tool, data from the EIME database and the related PSR was taken. If no data was found a conservative assumption was used (0% recyclability).

Schneider Electric Industries SAS  
Country Customer Care Center  
<http://www.se.com/contact>  
35, rue Joseph Monier  
CS 30323  
F- 92500 Rueil Malmaison Cedex  
RCS Nanterre 954 503 439  
Capital social 928 298 512 €

[www.se.com](http://www.se.com)

ENVEOLI2503026\_V1

Published by Schneider Electric

© 2023 - Schneider Electric – All rights reserved

03-2025