

# Product End of Life Instructions

**Variable speed drive - Altivar Process - 45kW - 380 to 480V - cabinet Integration - IP20**

## Altivar Process ATV600





## Potential disassembly risks

The information provided in this document assumes that the product is completely de-energized and uninstalled (refer to the instructions provided in the appropriate product manuals).

Dismantling/disassembling the product may entail hazards caused by, for example, sharp edges, chemical aggression or ejected parts.

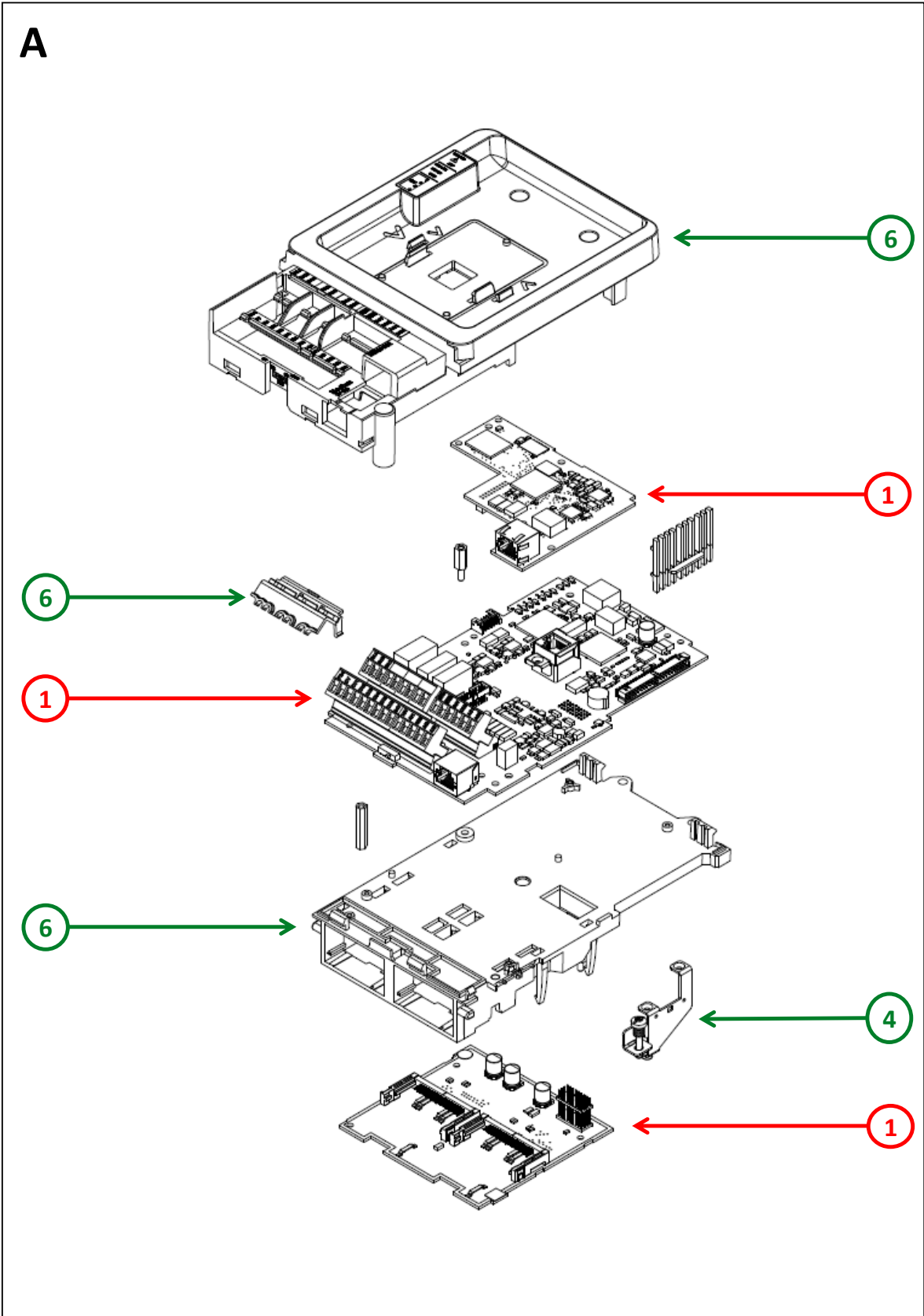
### **⚠ WARNING**

#### **HAZARD DUE TO INSUFFICIENT PROTECTION**

- Implement all safety measures required by the applicable regulations and by the processes used to dismantle/disassemble and dispose of the product.
- Use all necessary personal protective equipment such as gloves and goggles.

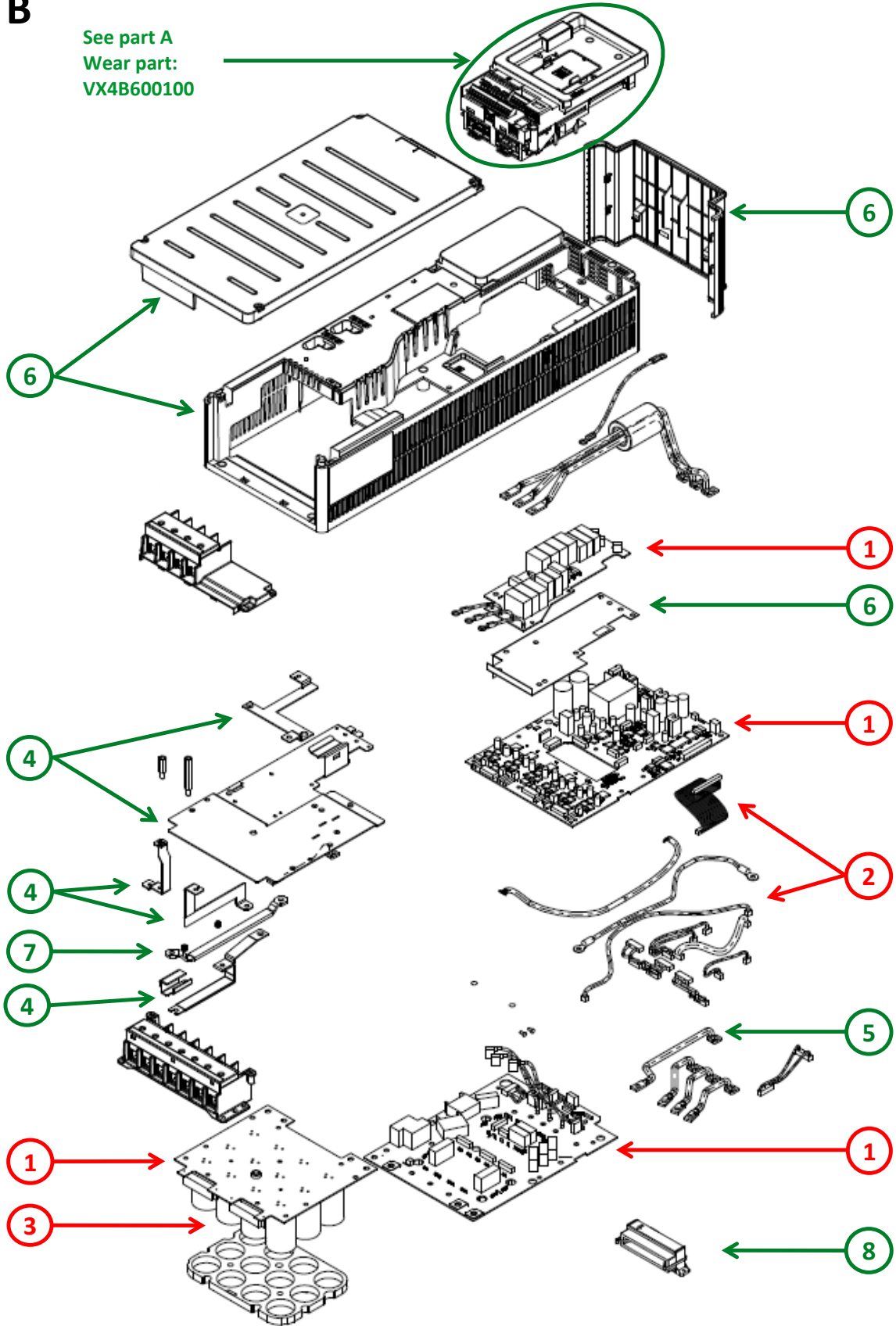
**Failure to follow these instructions can result in death or serious injury.**

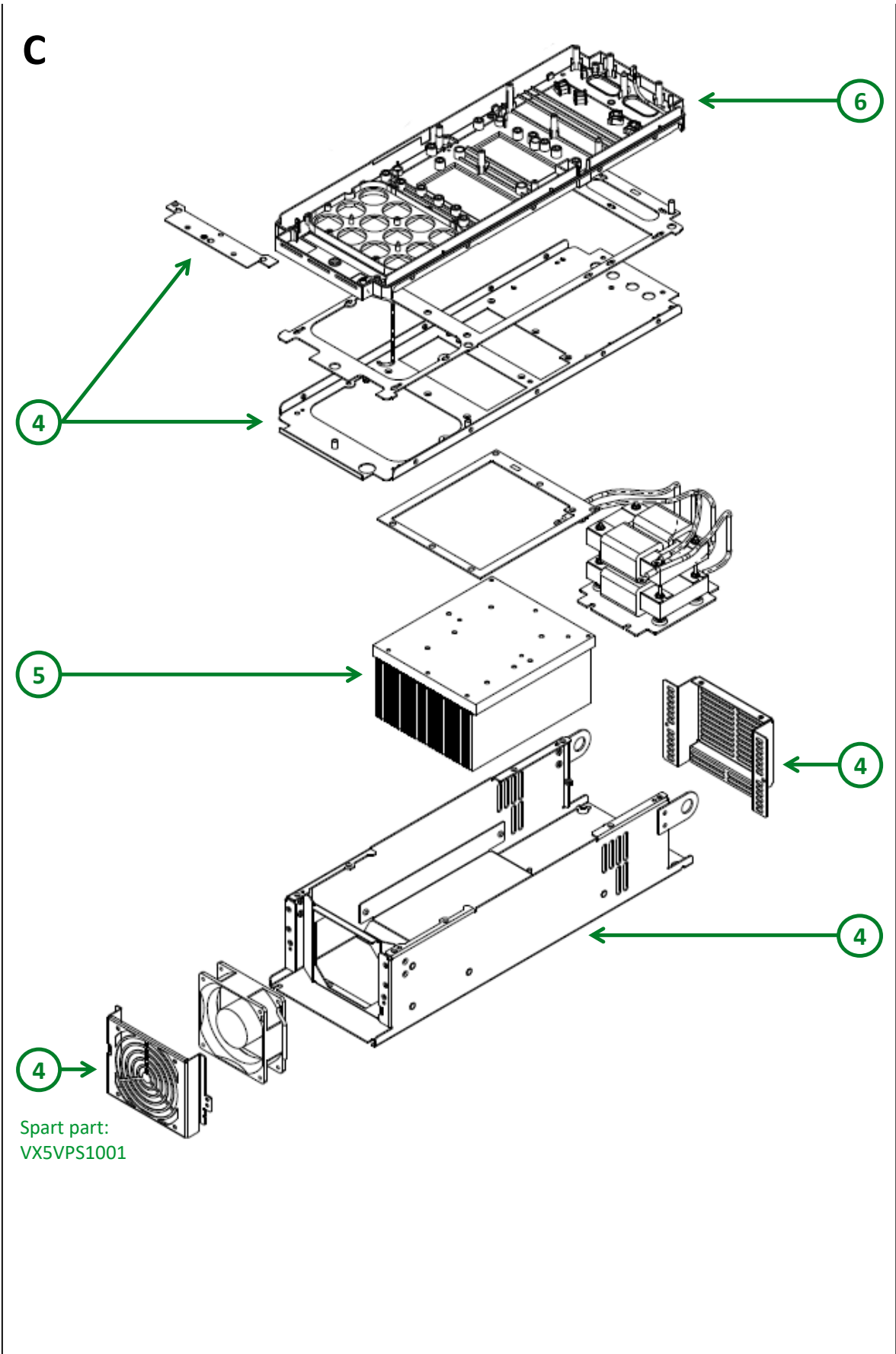
 **End of Life Instructions**



**B**

See part A  
Wear part:  
VX4B600100





Recommendation	Number on drawing	Component / Material	Weight (in g)	Comment
To be depolluted	1	Electronic Board (Power and Communication) > 10cm <sup>2</sup>	2476	
To be depolluted	2	Cable (high current)	450	
To be depolluted	3	Electrolyte capacitors which size: height > 25 mm, diameter > 25 mm or proportionately similar volume	1050	
To be dismantled	4	Steel	7660	Ground CTRL - Ground Input & Output - Ground Power & Plate - Top Grid - Supports - Lifting Hole - Plate - Lower Housing - Ground Bar
To be dismantled	5	Aluminium	5420	Heatsink- Links
To be dismantled	6	PC, ABS-PC, PA, PA6, HDPE, SAN with or without additive, PP+EPDM and PP	2158	Chassis -Control Chassis - Control Housing - Upper Housing - Cover - Insulation Sheet
To be dismantled	7	Copper	219	Links
To be dismantled	8	Ferrite	260	Toroide
Other			6807	

## Product description

Manufacturer identification	Schneider Electric Industries SAS
Brand name	Schneider Electric
Product function	The main function of the Altivar Process product range is the speed control and variation of a synchronous, asynchronous or reluctance electric motor for fluid management and industrial applications.
Product reference	ATV630D45N4Z
Description of the range	This range consists of products Altivar Process ATV600 designed for industrial processes in the following market segments: oil and gas, mining, minerals and metals, food and beverage water and wastewater..The rating is from 30 to 45 kW (40 to 60 HP).
Total representative product mass	26,5 kg
Representative product dimensions	597mm x 210mm x 262mm
Accessories	No accessories needed
Date of information release	07-2025

## Additional information

Legal information	The product family must be disposed according to the legislation of the country. This document is intended for use by end of life recyclers or treatment facilities. It provides the basic information to assure an appropriate end of life treatment for the components and materials of the product.
In case of special transportation: transportation method	No special transportation
Recyclability potential	<b>84%</b> The recyclability rate was calculated from the recycling rates of each material making up the product based on REEECY'LAB tool developed by Ecosystem, for components/materials not covered by the tool, data from the EIME database and the related PSR was taken. If no data was found a conservative assumption was used (0% recyclability).

Schneider Electric Industries SAS  
 Country Customer Care Center  
<http://www.se.com/contact>  
 35, rue Joseph Monier  
 CS 30323  
 F- 92500 Rueil Malmaison Cedex  
 RCS Nanterre 954 503 439  
 Capital social 928 298 512 €  
[www.se.com](http://www.se.com)  
 ENVEOLI1812006\_V2

Published by Schneider Electric  
 © 2023 - Schneider Electric – All rights reserved

07-2025