

# Product data sheet

Specifications

SQUARE D



Safety switch, general duty, non fusible, 30A, 2 pole, 3hp, 240VAC, NEMA 3R, bolt on provision

DU221RBUP

Product availability: Stock - Normally stocked in distribution facility

## Main

Product	Single Throw Safety Switch
Duty Rating	General duty
Device Application	Residential
Disconnect Type	Non-fusible disconnect switch
Factory Installed Neutral	None
Number of Poles	2
Current Rating	30 A
Voltage Rating	240 V AC
Enclosure Rating NEMA	NEMA 3R
Motor power hp	3 hp at 240 V AC 60 Hz for 1 phase motors

## Complementary

Mounting Type	Surface
Electrical Connection	Lugs
Wiring configuration	2 wires
Wire Size	AWG 14...AWG 6 copper AWG 12...AWG 6 aluminium
Tightening torque	30 lbf.in (3.4 N.m) 0.003...0.02 in <sup>2</sup> (2.08...13.3 mm <sup>2</sup> ) (AWG 14...AWG 6)
Depth	3.75 in (95.25 mm)
Width	7.75 in (196.85 mm)
Height	9.63 in (244.60 mm)
Net Weight	4.0 lb(US) (1.8 kg)

## Environment

Certifications	UL listed file E2875
----------------	----------------------

## Ordering and shipping details

Category	US1DE1A00106
Discount Schedule	DE1A
GTIN	785901665625
Returnability	Yes

## Packing Units

Price is "List Price" and may be subject to a trade discount – check with your local distributor or retailer for actual price.

<b>Unit Type of Package 1</b>	PCE
<b>Nbr. of units in pkg.</b>	1
<b>Package 1 Height</b>	5.79 in (14.7 cm)
<b>Package 1 Width</b>	7.99 in (20.3 cm)
<b>Package 1 Length</b>	10.98 in (27.9 cm)
<b>Package weight(Lbs)</b>	5.05 lb(US) (2.29 kg)
<b>Unit Type of Package 2</b>	PAL
<b>Number of Units in Package 2</b>	120
<b>Package 2 Height</b>	40.00 in (101.6 cm)
<b>Package 2 Width</b>	40.00 in (101.6 cm)
<b>Package 2 Length</b>	48.00 in (121.92 cm)
<b>Package 2 Weight</b>	618.757 lb(US) (280.663 kg)

## Contractual warranty

<b>Warranty</b>	18 months
-----------------	-----------



## Environmental Data

Schneider Electric aims to achieve Net Zero status by 2050 through supply chain partnerships, lower impact materials, and circularity via our ongoing “Use Better, Use Longer, Use Again” campaign to extend product lifetimes and recyclability.

[Environmental Data explained >](#)

[How we assess product sustainability >](#)

### Environmental footprint

[Environmental Disclosure](#)

[Product Environmental Profile](#)

## Use Better

### Materials and Substances

Packaging made with recycled cardboard

Yes

Packaging without single use plastic

Yes

[EU RoHS Directive](#)

Compliant

REACH Regulation

[REACH Declaration](#)

California proposition 65

**WARNING:** This product can expose you to chemicals including: Lead and lead compounds, which is known to the State of California to cause cancer and birth defects or other reproductive harm. For more information go to [www.P65Warnings.ca.gov](http://www.P65Warnings.ca.gov)

PVC free

Yes

## Use Again

### Repack and remanufacture

Circularity Profile

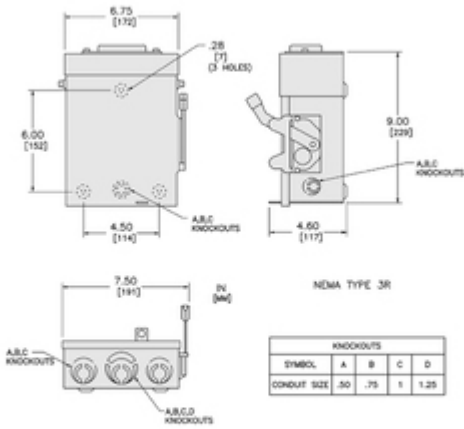
No need of specific recycling operations

Take-back

No

Technical Illustration

Dimensions



NEMA TYPE 3R

KNOCKOUTS				
SYMBOL	A	B	C	D
CONDUIT SIZE	.50	.75	1	1.25

TOP OF NEMA TYPE 3R DEVICES HAVE PROVISIONS FOR MAX. 1/8" (3.18) BOLT ON HUB.  
 ALL DIMENSIONS ARE APPROXIMATE. REFER TO TECHNICAL DRAWING AND DOCUMENTATION FOR COMPLETE DETAILS.

Image of product / Alternate images

Alternative

---

