

# Product End of Life Instructions

## PowerLogic EM4200 Series Enercept





## Potential disassembly risks

### ⚠ WARNING

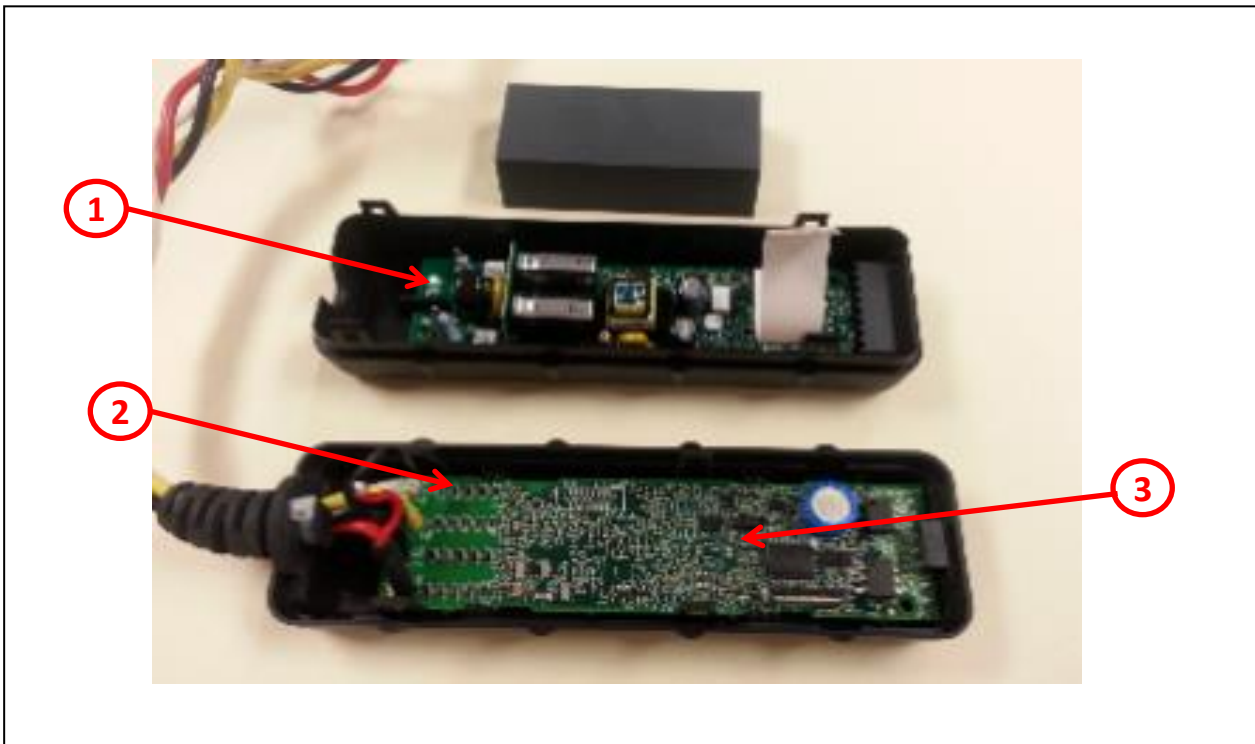
#### HAZARD OF ARC FLASH OR FIRE

- Disconnect battery terminals before disassembly
- Avoid any electrical connection between the terminals

**Failure to follow these instructions can result in death or serious injury.**



## End of Life Instructions



Recommendation	Number on drawing	Component / Material	Weight (in g)	Comment
To be depolluted	1	Electronic Board (Communication) > 10cm <sup>2</sup>	70.8	Including all soldering parts
To be depolluted	2	Electronic Board (Communication) > 10cm <sup>2</sup>	47.3	Including all soldering parts
To be depolluted	3	Electronic Board (Communication) > 10cm <sup>2</sup>	70.6	Including all soldering parts



## Product description

Manufacturer identification	Schneider Electric Industries SAS
Brand name	Schneider Electric
Product function	The PowerLogic EM4200 Series Enercept power and energy meter is a unique compact retrofit solution for measuring energy data. ANSI version, can be associated with an optional fuse pack. Designed for simplicity, the EM4200 has flexibility of a wide range of Current Transducers to match most applications from 50-5000A.
Product reference	METSEEM4236
Additional similar product references	METSEEM4236 METSEEM4236A12 METSEEM4236A18 METSEEM4236B101 METSEEM4236B201 METSEEM4236B401 METSEEM4235 METSEEM4235A12 METSEEM4235A18 METSEEM4235B101 METSEEM4235B201 METSEEM4235B401
Total representative product mass	331.82 g
Representative product dimensions	46.63mm x 152.36mm x 35.81mm
Date of information release	19/08/2025



## Additional information

Legal information	This product family is in the scope of European Union directive 2012/19/EU on Waste Electrical and Electronic Equipment (WEEE). The product family must be disposed according to the legislation of the country. This document is intended for use by end of life recyclers or treatment facilities. It provides the basic information to assure an appropriate end of life treatment for the components and materials of the product.
Recyclability potential	<b>0%</b> The recyclability rate was calculated from the recycling rates of each material making up the product based on REEECYLAB tool developed by Ecosystem, for components/materials not covered by the tool, data from the EIME database and the related PSR was taken. If no data was found a conservative assumption was used (0% recyclability).

Schneider Electric Industries SAS

Country Customer Care Center  
<http://www.se.com/contact>

35, rue Joseph Monier  
CS 30323  
F- 92500 Rueil Malmaison Cedex  
RCS Nanterre 954 503 439  
Capital social 928 298 512 €

[www.se.com](http://www.se.com)

ENVEOLI2506060\_V1

Published by Schneider Electric

© 2023 - Schneider Electric – All rights reserved

19/08/2025