

# Product End of Life Instructions

## Power Logic™ ION7400 Panel Mount Utility Meter





## Potential disassembly risks

The information provided in this document assumes that the product is completely de-energized and uninstalled (refer to the instructions provided in the appropriate product manuals).

Dismantling/disassembling the product may entail hazards caused by, for example, sharp edges, chemical aggression or ejected parts.

### ⚠ WARNING

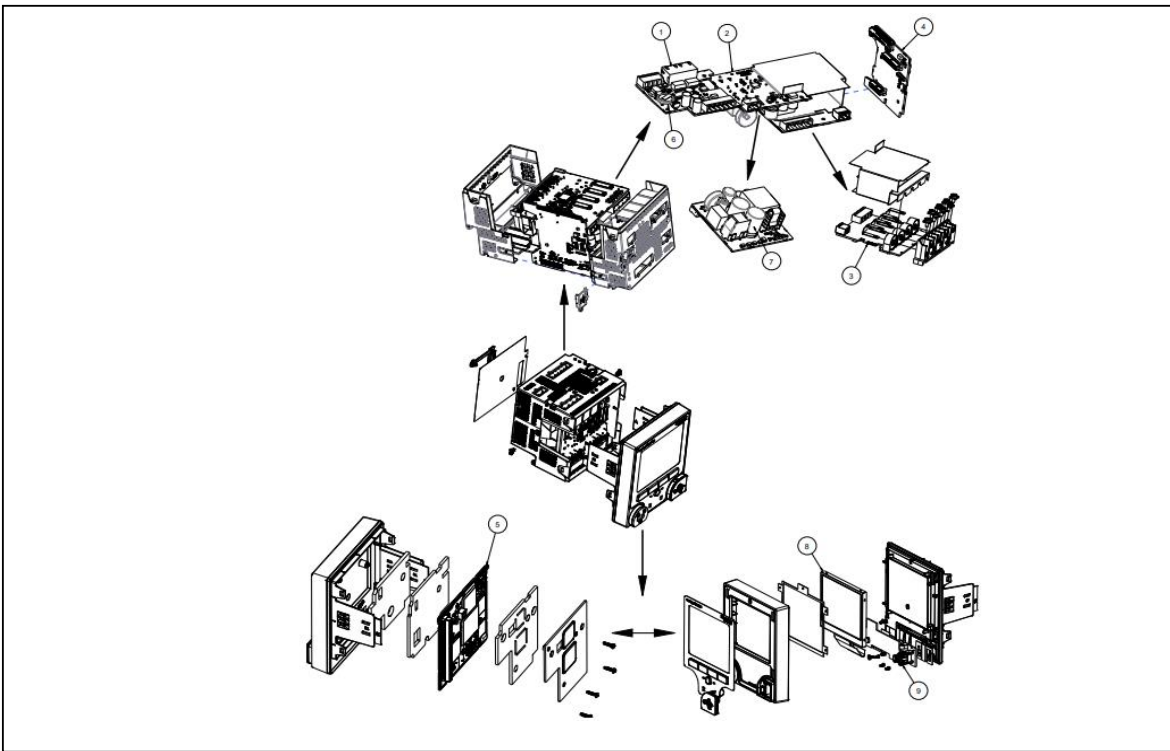
#### HAZARD DUE TO INSUFFICIENT PROTECTION

- Implement all safety measures required by the applicable regulations and by the processes used to dismantle/disassemble and dispose of the product.
- Use all necessary personal protective equipment such as gloves and goggles.

**Failure to follow these instructions can result in death or serious injury.**



## End of Life Instructions



Recommendation	Number on drawing	Component / Material	Weight (in g)	Comment
To be dismantled	1	PCBA, COMM-IO BOARD	26	
To be dismantled	2	PCBA, PSU BOARD	32	
To be dismantled	3	PCBA, CVM BOARD	37	
To be dismantled	4	PCBA, BACKPLANE INT	34	
To be dismantled	5	PCBA, CPU BOARD	23	
To be dismantled	6	BAT LI/MNO2	1.5	
To be dismantled	7	Electrolytic Aluminium Capacitor	10.2 x2	
To be dismantled	8	LCD	195	
To be dismantled	9	PCBA, USB BOARD	14.66	



## Product description

<b>Manufacturer identification</b>	Schneider Electric Industries SAS
<b>Brand name</b>	Schneider Electric
<b>Product function</b>	PowerLogic ION7400 utility feeder power meters combine capabilities not typically available in compact meters. The main purpose of the ION7400 meter is Class 0.2s power and energy metering. I/O option modules include 2 relays and 6 digital inputs or 2 analog outputs and 4 analog inputs. Wide control power range of 90-415 VAC / 110-415 VDC. Operating environment of -25 to +70C; Humidity rating of 5% to 95%; Altitude up to 3000 m.
<b>Product reference</b>	METSEION7400
<b>Total representative product mass</b>	706 g
<b>Representative product dimensions</b>	L 112mm x W 98mm x D 78.5mm
<b>Accessories</b>	NA
<b>Date of information release</b>	03-2025



## Additional information

<b>Legal information</b>	This product family is in the scope of European Union directive 2012/19/EU on Waste Electrical and Electronic Equipment (WEEE). The product family must be disposed according to the legislation of the country. This document is intended for use by end of life recyclers or treatment facilities. It provides the basic information to assure an appropriate end of life treatment for the components and materials of the product.	
<b>In case of special transportation: transportation method</b>	NA	
<b>Recyclability potential</b>	<b>4%</b>	The recyclability rate was calculated from the recycling rates of each material making up the product based on REEECY'LAB tool developed by Ecosystem, for components/materials not covered by the tool, data from the EIME database and the related PSR was taken. If no data was found a conservative assumption was used (0% recyclability).

Schneider Electric Industries SAS

Country Customer Care Center  
<http://www.se.com/contact>

35, rue Joseph Monier

CS 30323

F- 92500 Rueil Malmaison Cedex

RCS Nanterre 954 503 439

Capital social 928 298 512 €

[www.se.com](http://www.se.com)

ENVEOLI1512006\_V2

Published by Schneider Electric

© 2023 - Schneider Electric – All rights reserved

03-2025