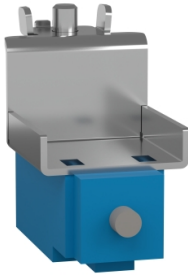


Product data sheet

Specifications



Thala Door switch 3 A/240 V AC for PLA enclosure

NSYSNLPLA

Main

Range	PanelSeT
Product or component type	Door switch
Application	Multi-purpose
Nominal dimensions of the housing	-
Mounting location	Enclosure
Range compatibility	PanelSeT PLA enclosure
Device composition	Fixing elements 1 x switch/commutator unit 1 x fixing support

Complementary

Fixing mode	Direct fixing - enclosure location
Input type	NC + NO
Absolute maximum input	3 A/240 V

Packing Units

Unit Type of Package 1	PCE
Number of Units in Package 1	1
Package 1 Height	3.500 cm
Package 1 Width	9.000 cm
Package 1 Length	14.000 cm
Package 1 Weight	233.000 g

Contractual warranty

Warranty	18 months
----------	-----------

Disclaimer: This documentation is not intended as a substitute for and is not to be used for determining suitability or reliability of these products for specific user applications



Environmental Data

Schneider Electric aims to achieve Net Zero status by 2050 through supply chain partnerships, lower impact materials, and circularity via our ongoing “Use Better, Use Longer, Use Again” campaign to extend product lifetimes and recyclability.

[Environmental Data explained >](#)

[How we assess product sustainability >](#)

Environmental footprint

[Environmental Disclosure](#)

[Product Environmental Profile](#)

Use Better

Materials and Substances

Packaging made with recycled cardboard

No

Packaging without single use plastic

No

[EU RoHS Directive](#)

Compliant with Exemptions

SCIP Number

C64c958a-5d4a-48a4-ab87-b20d6332fb03

REACH Regulation

[REACH Declaration](#)

Use Again

Repack and remanufacture

End of life manual availability

No need of specific recycling operations

Take-back

No

WEEE Label


 The product must be disposed on European Union markets following specific waste collection and never end up in rubbish bins

Image of product / Alternate images

Alternative



Image of product in real life situation

