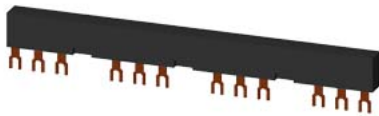


3-phase busbars Modular spacing 63 mm for 4 switches and accessories Fork shape connections



product category	Infeed systems
product designation	3-phase busbar
suitability for use	circuit-breakers 3RV2

General technical data	
size of the circuit-breaker	S00, S0
protection class IP on the front according to IEC 60529	IP20
Substance Prohibition (Date)	07/01/2006
Weight	0.121 kg
number of poles for main current circuit	3
operational current rated value	63 A

Environmental footprint	
Environmental Product Declaration (EPD)	Yes
Global Warming Potential [CO2 eq] total	19.1 kg
Global Warming Potential [CO2 eq] during manufacturing	0.405 kg
Global Warming Potential [CO2 eq] during operation	18.7 kg
Global Warming Potential [CO2 eq] after end of life	-0.076 kg

Electrical Safety	
protection class IP on the front according to IEC 60529	IP20
touch protection on the front according to IEC 60529	finger-safe, for vertical contact from the front

Connections/ Terminals	
type of electrical connection for main current circuit	screw-type terminals

Approvals Certificates	
General Product Approval	Test Certificates



[Confirmation](#)



[Special Test Certificate](#)

Test Certificates	Marine / Shipping
-------------------	-------------------

[Type Test Certificates/Test Report](#)



Marine / Shipping	other	Environment
-------------------	-------	-------------



[Confirmation](#)



[Environmental Con-
firmations](#)

Further information

Information on the packaging

<https://support.industry.siemens.com/cs/ww/en/view/109813875>

Information- and Downloadcenter (Catalogs, Brochures,...)

<https://www.siemens.com/ic10>

Industry Mall (Online ordering system)

<https://mall.industry.siemens.com/mall/en/en/Catalog/product?mlfb=3RV1915-3CB>

Cax online generator

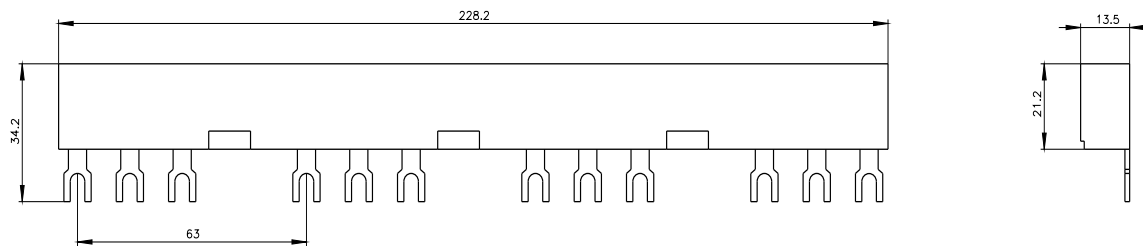
<http://support.automation.siemens.com/WW/CAXorder/default.aspx?lang=en&mlfb=3RV1915-3CB>

Service&Support (Manuals, Certificates, Characteristics, FAQs,...)

<https://support.industry.siemens.com/cs/ww/en/ps/3RV1915-3CB>

Image database (product images, 2D dimension drawings, 3D models, device circuit diagrams, EPLAN macros, ...)

http://www.automation.siemens.com/bilddb/cax_de.aspx?mlfb=3RV1915-3CB&lang=en



last modified:

5/29/2024