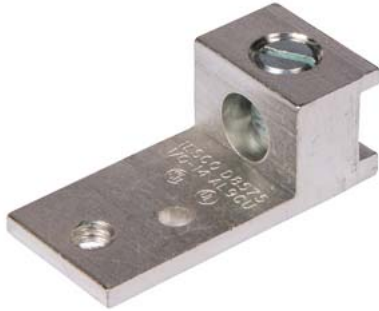


SIEMENS LOW VOLTAGE VBII HEAVY DUTY SAFETY SWITCH ACCESSORY.  
NEUTRAL KIT RATED 600V SUITABLE FOR OPERATING CURRENTS  
400/600A.



General technical data	
suitability for operation	For 25 AMP, Rotary Switch
Model	
product brand name	Siemens
product type designation	LBR, Standard Duty, Padlockable
special product feature	Mounting: Direct Mount; Marking: O/I
General product approval	
degree of protection NEMA rating	NEMA 1, IP65

last modified:

1/6/2021 

