

# Product data sheet

Specifications

SQUARE D



Transformer, Type T, industrial control, 500VA, 1 phase, 240/416/480/600V primary, 99/120/130V secondary, 115C rise

9070T500D50

Product availability: Stock - Normally stocked in distribution facility

## Main

Product Type	Industrial Control Transformer
Type	T

## Complementary

Number of Phases	1 phase
Power Rating	500 VA UL 500 VA CSA 500 VA NOM 300 VA CE
Primary to Secondary Voltage	240/416/480/600 V 99/120/130 V 230/400/460/575 V 95/115/125 V 220/380/440/550 V 90/110/120 V 208/360/416/520 V 85/100/110 V
Temperature Rise	115 °C
Electrical Connection	Screw clamp terminals
Height	4.51 in (114.55 mm)
Width	5.25 in (133.35 mm)
Depth	5.61 in (142.49 mm)
Material	Copper: winding
Fingersafe Cover Compatibility	FSC23

## Environment

Certifications	CSA file LR37055 guide 184-N-90 UL listed file E61239
Enclosure Type	Not rated (open device)
Insulation Temperature	356 °F (180 °C)

## Ordering and shipping details

Category	US10CP816201
Discount Schedule	0CP8
GTIN	785901327295
Returnability	Yes
Country of origin	MX

## Packing Units

Price is "List Price" and may be subject to a trade discount – check with your local distributor or retailer for actual price.

Disclaimer: This documentation is not intended as a substitute for and is not to be used for determining suitability or reliability of these products for specific user applications

Unit Type of Package 1	PCE
Nbr. of units in pkg.	1
Package 1 Height	7.00 in (17.78 cm)
Package 1 Width	8.90 in (22.606 cm)
Package 1 Length	8.50 in (21.59 cm)
Package weight(Lbs)	17.831 lb(US) (8.088 kg)

## Contractual warranty

Warranty	10 Years
----------	----------

Schneider Electric aims to achieve Net Zero status by 2050 through supply chain partnerships, lower impact materials, and circularity via our ongoing “Use Better, Use Longer, Use Again” campaign to extend product lifetimes and recyclability.

[Environmental Data explained >](#)

[How we assess product sustainability >](#)

Environmental footprint	
Environmental Disclosure	<a href="#">Product Environmental Profile</a>

Use Better

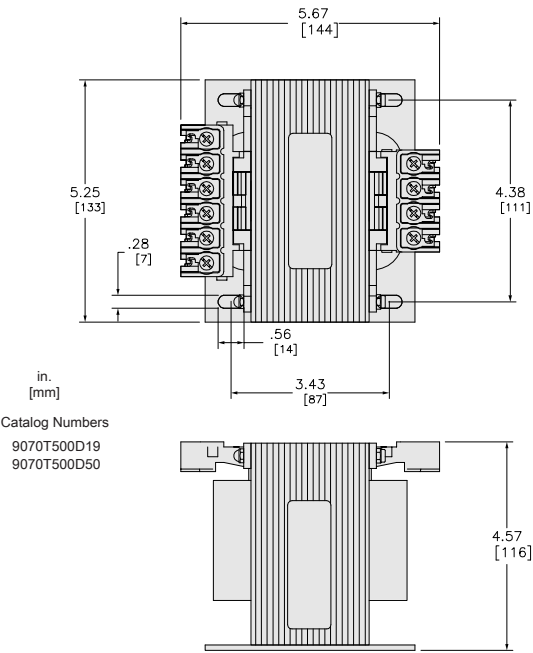
Materials and Substances	
Packaging made with recycled cardboard	Yes
Packaging without single use plastic	No
<a href="#">EU RoHS Directive</a>	Compliant with Exemptions
REACH Regulation	<a href="#">REACH Declaration</a>
California proposition 65	WARNING: This product can expose you to chemicals including: Phenyl glycidyl ether, which is known to the State of California to cause cancer and birth defects or other reproductive harm. For more information go to <a href="http://www.P65Warnings.ca.gov">www.P65Warnings.ca.gov</a>
PVC free	Yes

Use Again

Repack and remanufacture	
Circularity Profile	No need of specific recycling operations
Take-back	No

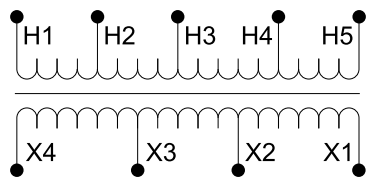
Technical Illustration

Dimensions



Technical Illustration

Wiring diagram



Options				
Voltage Code	Voltages		Connections	
	Primary	Secondary	Primary	Secondary
D50	208/364/420/500 220/380/440/550 230/400/480/575 240/416/480/600	85/100/110 91/110/120 95/115/125 99/120/130	208 or 220 or 230 or 240: Connect to H1 and H2 364 or 380 or 400 or 416: Connect to H1 and H3 420 or 440 or 460 or 480: Connect to H1 and H4 500 or 550 or 575 or 600: Connect to H1 and H5	85 or 91 or 95 or 99: Connect to X1 and X2 100 or 110 or 115 or 120: Connect to X1 and X3 110 or 120 or 125 or 130: Connect to X1 and X4

REFER TO TECHNICAL DOCUMENTATION FOR COMPLETE INFORMATION.