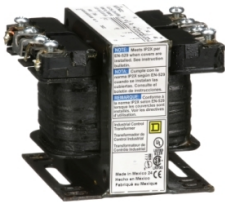


Product data sheet

Specifications



Transformer, Type T, industrial control, 50VA, 1 phase, 240x480V primary, 24V secondary, 55C rise

9070T50D2

Product availability: Stock - Normally stocked in distribution facility

Main

| | |
|--------------|--------------------------------|
| Product Type | Industrial Control Transformer |
| Type | T |

Complementary

| | |
|--------------------------------|--|
| Number of Phases | 1 phase |
| Power Rating | 50 VA UL 50 VA CSA 50 VA NOM 50 VA CE |
| Primary to Secondary Voltage | 240 x 480 V 24 V |
| Temperature Rise | 55 °C |
| Electrical Connection | Screw clamp terminals |
| Height | 2.58 in (65.53 mm) |
| Width | 3 in (76.2 mm) |
| Depth | 3.09 in (78.49 mm) |
| Material | Copper: winding |
| Fingersafe Cover Compatibility | FSC1 |

Environment

| | |
|------------------------|--|
| Certifications | CSA file LR37055 guide 184-N-90 UL listed file E61239 |
| Enclosure Type | Not rated (open device) |
| Insulation Temperature | 221 °F (105 °C) |

Ordering and shipping details

| | |
|-------------------|--------------|
| Category | US10CP816200 |
| Discount Schedule | 0CP8 |
| GTIN | 785901904939 |
| Returnability | Yes |
| Country of origin | MX |

Packing Units

| | |
|------------------------|-----|
| Unit Type of Package 1 | PCE |
| Nbr. of units in pkg. | 1 |

Price is "List Price" and may be subject to a trade discount – check with your local distributor or retailer for actual price.

Disclaimer: This documentation is not intended as a substitute for and is not to be used for determining suitability or reliability of these products for specific user applications

| | |
|------------------------------|------------------------------|
| Package 1 Height | 2.63 in (6.68 cm) |
| Package 1 Width | 3.10 in (7.874 cm) |
| Package 1 Length | 3.00 in (7.62 cm) |
| Package weight(Lbs) | 2.560 lb(US) (1.161 kg) |
| Unit Type of Package 2 | PAL |
| Number of Units in Package 2 | 450 |
| Package 2 Height | 40.00 in (101.6 cm) |
| Package 2 Width | 40.00 in (101.6 cm) |
| Package 2 Length | 48.00 in (121.92 cm) |
| Package 2 Weight | 1153.036 lb(US) (523.008 kg) |

Contractual warranty

| | |
|----------|----------|
| Warranty | 10 Years |
|----------|----------|

Schneider Electric aims to achieve Net Zero status by 2050 through supply chain partnerships, lower impact materials, and circularity via our ongoing “Use Better, Use Longer, Use Again” campaign to extend product lifetimes and recyclability.

[Environmental Data explained >](#)

[How we assess product sustainability >](#)

| Environmental footprint | |
|--------------------------|---|
| Environmental Disclosure | Product Environmental Profile |

Use Better

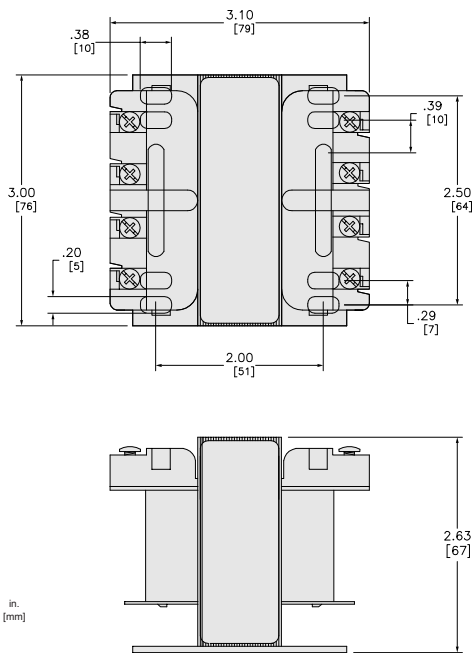
| Materials and Substances | |
|--|---|
| Packaging made with recycled cardboard | Yes |
| Packaging without single use plastic | No |
| EU RoHS Directive | Compliant with Exemptions |
| REACH Regulation | REACH Declaration |
| California proposition 65 | WARNING: This product can expose you to chemicals including: Phenyl glycidyl ether, which is known to the State of California to cause cancer and birth defects or other reproductive harm. For more information go to www.P65Warnings.ca.gov |
| PVC free | Yes |

Use Again

| Repack and remanufacture | |
|--------------------------|--|
| Circularity Profile | No need of specific recycling operations |
| Take-back | No |

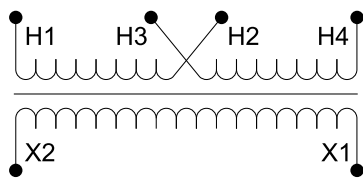
Technical Illustration

Dimensions



Technical Illustration

Wiring diagram



Options

| Voltage Code | Voltages | | Connections | |
|--------------|-----------|-----------|---|----------------------|
| | Primary | Secondary | Primary | Secondary |
| D2 | 240 x 480 | 24 | 240: Connect to H1 and H4 Jumper H1 with H3 Jumper H2 with H4 480: Connect to H1 and H4 Jumper H2 with H3 | Connect to X1 and X2 |
| D23 | 120 x 240 | 24 | 120: Connect to H1 and H4 Jumper H1 with H3 Jumper H2 with H4 240: Connect to H1 and H4 Jumper H2 with H3 | |

REFER TO TECHNICAL DOCUMENTATION FOR COMPLETE INFORMATION.