

Product data sheet

Specifications

SQUARE D



Transformer, Type T, industrial control, 750VA, 1 phase, 208/230/460V primary, 115V secondary, 115C rise

9070T750D20

Product availability: Stock - Normally stocked in distribution facility

Main

| | |
|--------------|--------------------------------|
| Product Type | Industrial Control Transformer |
| Type | T |

Complementary

| | |
|--------------------------------|--|
| Number of Phases | 1 phase |
| Power Rating | 750 VA UL 750 VA CSA 750 VA NOM 500 VA CE |
| Primary to Secondary Voltage | 208/230/460 V 115 V |
| Temperature Rise | 115 °C |
| Electrical Connection | Screw clamp terminals |
| Height | 4.51 in (114.55 mm) |
| Width | 5.25 in (133.35 mm) |
| Depth | 6.3 in (160.02 mm) |
| Material | Copper: winding |
| Fingersafe Cover Compatibility | FSC2 |

Environment

| | |
|------------------------|--|
| Certifications | CSA file LR37055 guide 184-N-90 UL listed file E61239 |
| Enclosure Type | Not rated (open device) |
| Insulation Temperature | 356 °F (180 °C) |

Ordering and shipping details

| | |
|-------------------|--------------|
| Category | US10CP816201 |
| Discount Schedule | 0CP8 |
| GTIN | 785901845522 |
| Returnability | Yes |
| Country of origin | MX |

Packing Units

| | |
|------------------------|-----|
| Unit Type of Package 1 | PCE |
|------------------------|-----|

Price is "List Price" and may be subject to a trade discount – check with your local distributor or retailer for actual price.

Disclaimer: This documentation is not intended as a substitute for and is not to be used for determining suitability or reliability of these products for specific user applications

| | |
|-----------------------|--------------------------|
| Nbr. of units in pkg. | 1 |
| Package 1 Height | 7.00 in (17.780 cm) |
| Package 1 Width | 8.30 in (21.082 cm) |
| Package 1 Length | 8.80 in (22.352 cm) |
| Package weight(Lbs) | 21.901 lb(US) (9.934 kg) |

Contractual warranty

| | |
|----------|----------|
| Warranty | 10 Years |
|----------|----------|

Schneider Electric aims to achieve Net Zero status by 2050 through supply chain partnerships, lower impact materials, and circularity via our ongoing “Use Better, Use Longer, Use Again” campaign to extend product lifetimes and recyclability.

[Environmental Data explained >](#)

[How we assess product sustainability >](#)

| Environmental footprint | |
|--------------------------|---|
| Environmental Disclosure | Product Environmental Profile |

Use Better

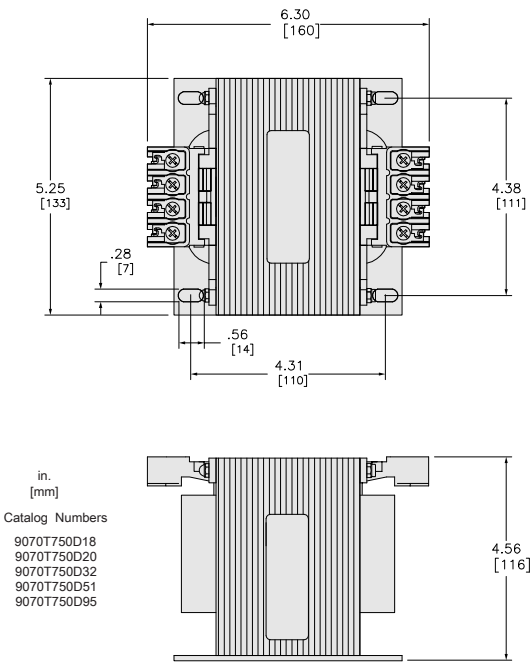
| Materials and Substances | |
|--|---|
| Packaging made with recycled cardboard | Yes |
| Packaging without single use plastic | No |
| EU RoHS Directive | Compliant with Exemptions |
| REACH Regulation | REACH Declaration |
| California proposition 65 | WARNING: This product can expose you to chemicals including: Phenyl glycidyl ether, which is known to the State of California to cause cancer and birth defects or other reproductive harm. For more information go to www.P65Warnings.ca.gov |
| PVC free | Yes |

Use Again

| Repack and remanufacture | |
|--------------------------|--|
| Circularity Profile | No need of specific recycling operations |
| Take-back | No |

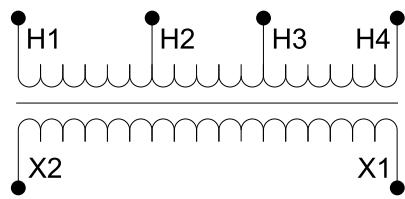
Technical Illustration

Dimensions



Technical Illustration

Wiring diagram



Options

| Voltage Code | Voltages | | Connections | |
|--------------|-------------|-----------|---|----------------------|
| | Primary | Secondary | Primary | Secondary |
| D20 | 208/230/460 | 115 | 208: Connect to H1 and H2 230: Connect to H1 and H3 460: Connect to H1 and H4 | Connect to X1 and X2 |

REFER TO TECHNICAL DOCUMENTATION FOR COMPLETE INFORMATION.