

# Product data sheet

Specifications

SQUARE D



Industrial control transformer, Type TF, 1 phase, 300VA, 208/230/460V primary, 115V secondary, 50/60Hz

9070TF300D20

Product availability: Non-Stock - Not normally stocked in distribution facility

## Main

Product or Component Type	Industrial Control Transformer
Type	TF

## Complementary

Number of Phases	1 phase
Power Rating	300 VA UL 300 VA CSA 300 VA NOM 200 VA CE
Primary to Secondary Voltage	208/230/460 V 115 V
Fuse type	0.41 x 1.50 in CC top
Temperature rise	80 °C
Electrical Connection	Screw clamp terminals
Height	5.13 in (130.30 mm)
Width	4.5 in (114.3 mm)
Depth	5.11 in (129.79 mm)
Material	Copper: winding
Fingersafe Cover Compatibility	FSC2

## Environment

Product Certifications	CSA file LR37055 guide 184-N-90 UL listed file E61239
Enclosure Type	Not rated (open device)
Insulation temperature	266 °F (130 °C)

## Ordering and shipping details

Category	US10CP816207
Discount Schedule	0CP8
GTIN	785901907138
Returnability	No
Country of origin	US

## Packing Units

Price is "List Price" and may be subject to a trade discount – check with your local distributor or retailer for actual price.

Disclaimer: This documentation is not intended as a substitute for and is not to be used for determining suitability or reliability of these products for specific user applications



Unit Type of Package 1	PCE
Nbr. of units in pkg.	1
Package 1 Height	6.40 in (16.256 cm)
Package 1 Width	6.70 in (17.018 cm)
Package 1 Length	7.50 in (19.05 cm)
Package weight(Lbs)	10.399 lb(US) (4.717 kg)
Unit Type of Package 2	PAL
Number of Units in Package 2	150
Package 2 Height	40.00 in (101.6 cm)
Package 2 Width	40.00 in (101.6 cm)
Package 2 Length	48.00 in (121.92 cm)
Package 2 Weight	1660.492 lb(US) (753.186 kg)

## Contractual warranty

Warranty	18 months
----------	-----------



Schneider Electric aims to achieve Net Zero status by 2050 through supply chain partnerships, lower impact materials, and circularity via our ongoing “Use Better, Use Longer, Use Again” campaign to extend product lifetimes and recyclability.

[Environmental Data explained >](#)

[How we assess product sustainability >](#)

Environmental footprint	
Environmental Disclosure	<a href="#">Product Environmental Profile</a>

Use Better

Materials and Substances	
Packaging made with recycled cardboard	Yes
Packaging without single use plastic	No
<a href="#">EU RoHS Directive</a>	Compliant with Exemptions
REACH Regulation	<a href="#">REACH Declaration</a>
California proposition 65	WARNING: This product can expose you to chemicals including: Phenyl glycidyl ether, which is known to the State of California to cause cancer and birth defects or other reproductive harm. For more information go to <a href="http://www.P65Warnings.ca.gov">www.P65Warnings.ca.gov</a>
PVC free	Yes

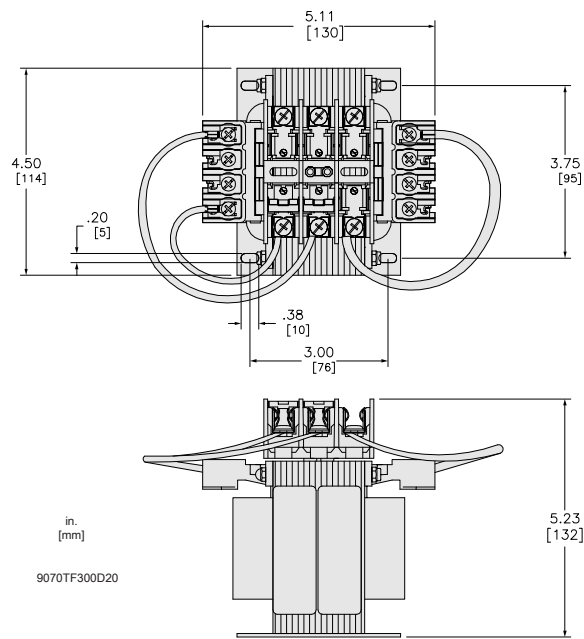
Use Again

Repack and remanufacture	
Circularity Profile	No need of specific recycling operations
Take-back	No



Technical Illustration

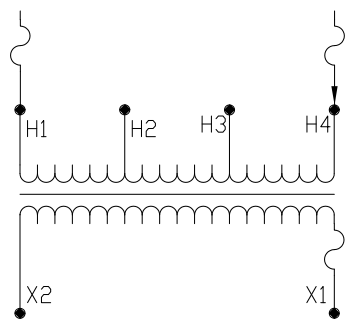
Dimensions





Technical Illustration

Wiring diagram



Options

Voltage Code	Voltages		Connections	
	Primary	Secondary	Primary	Secondary
D20	208 230 460	115	208: Connect to H1 and H2 230: Connect to H1 and H3 460: Connect to H1 and H4	Connect to X1 and X2

REFER TO TECHNICAL DOCUMENTATION FOR COMPLETE INFORMATION.