

Product data sheet

Specifications

SQUARE D



Power distribution block, Linergy, 2 pole, 1 line, 1 load, 310 Cu, 250A Al, 600V

9080LBA263101

Product availability: Stock - Normally stocked in distribution facility

Main

Range	9080LB
Product	Power Distribution Block
Current Rating	310 A copper 250 A aluminium

Complementary

Voltage Rating	600 V AC/DC
Mounting Type	Surface mount
Number of poles	2
Terminals per Pole	1 line 1 load
Wire Size	Line 1, AWG 6...350 kcmil, copper or aluminium Load 1, AWG 6...350 kcmil, copper or aluminium
Electrical Connection	Tin plated aluminium lugs
SCCR	100 kA UL 508 A
Ambient Air Temperature for Operation	-40...150 °C (-40...302 °F)
Block Material	Phenolic: block
Terminal Tightening Torque	Line lug 275 lbf.in (31.07 N.m) AWG 6...350 kcmil copper or aluminium Load lug 275 lbf.in (31.07 N.m) AWG 6...350 kcmil copper or aluminium
Wire stripping length	Line: 1.06 in (26.92 mm) Load: 1.06 in (26.92 mm)
Height	3.38 in (85.85 mm)
Width	1.94 in (49.28 mm)
Depth	2.61 in (66.29 mm)
End Barrier	9080LB32

Environment

Certifications	CE UL recognized E60616 CCN XCFR2 CSA file 70361 class 6228 01
----------------	--

Ordering and shipping details

Category	US10CP121711
Discount Schedule	0CP1
GTIN	785901156987

Price is "List Price" and may be subject to a trade discount – check with your local distributor or retailer for actual price.

Disclaimer: This documentation is not intended as a substitute for and is not to be used for determining suitability or reliability of these products for specific user applications

Returnability	Yes
Country of origin	US

Packing Units

Unit Type of Package 1	PCE
Nbr. of units in pkg.	1
Package 1 Height	3.00 in (7.620 cm)
Package 1 Width	4.30 in (10.922 cm)
Package 1 Length	5.30 in (13.462 cm)
Package weight(Lbs)	17.600 oz (498.951 g)
Unit Type of Package 2	CAR
Number of Units in Package 2	16
Package 2 Height	11.10 in (28.194 cm)
Package 2 Width	9.50 in (24.130 cm)
Package 2 Length	13.40 in (34.036 cm)
Package 2 Weight	18.360 lb(US) (8.328 kg)

Contractual warranty

Warranty	18 months
----------	-----------



Environmental Data

Schneider Electric aims to achieve Net Zero status by 2050 through supply chain partnerships, lower impact materials, and circularity via our ongoing “Use Better, Use Longer, Use Again” campaign to extend product lifetimes and recyclability.

[Environmental Data explained >](#)

[How we assess product sustainability >](#)

Use Better

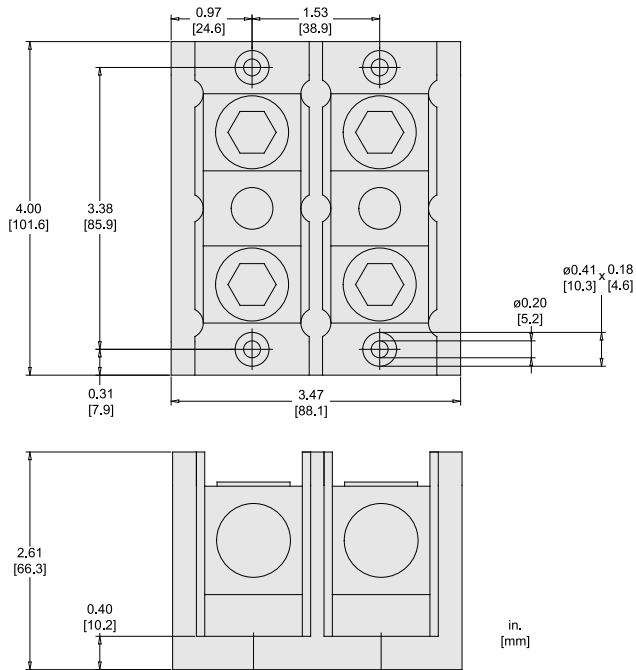
Materials and Substances	
Packaging made with recycled cardboard	Yes
Packaging without single use plastic	No
EU RoHS Directive	Compliant
REACH Regulation	REACH Declaration
California proposition 65	WARNING: This product can expose you to chemicals including: Lead and lead compounds, which is known to the State of California to cause cancer and birth defects or other reproductive harm. For more information go to www.P65Warnings.ca.gov

Use Again

Repack and remanufacture	
Take-back	No

Technical Illustration

Dimensions



9080LBA263101