

Product data sheet

Specifications

SQUARE D



Power distribution block, Linergy, 3 pole, 2 line, 12 load, 760A Cu, 620A Al, 600V

9080LBA365212

Product availability: Stock - Normally stocked in distribution facility

Main

Range	9080LB
Product	Power Distribution Block
Current Rating	760 A copper 620 A aluminium

Complementary

Voltage Rating	600 V AC/DC
Mounting Type	Surface mount
Number of poles	3
Terminals per Pole	2 line 12 load
Wire Size	Line 2, AWG 4...500 kcmil, copper or aluminium Load 12, AWG 14...AWG 4, copper or aluminium
Electrical Connection	Tin plated aluminium lugs
SCCR	100 kA UL 508 A
Ambient Air Temperature for Operation	-40...150 °C (-40...302 °F)
Block Material	Phenolic: block
Terminal Tightening Torque	Load lug 35 lbf.in (4.0 N.m) AWG 14...AWG 4 copper or aluminium Line lug 375 lbf.in (42.4 N.m) AWG 4...500 kcmil copper or aluminium
Wire stripping length	Load: 1 in (25.4 mm) for bottom connection Line: 1.63 in (41.40 mm) Load: 0.63 in (16.002 mm) for top connection
Height	5.5 in (139.7 mm)
Width	8.54 in (216.92 mm)
Depth	3.13 in (79.50 mm)
End Barrier	9080LB53

Environment

Certifications	CE UL recognized E60616 CCN XCFR2 CSA file 70361 class 6228 01
----------------	--

Ordering and shipping details

Category	US10CP121711
Discount Schedule	0CP1
GTIN	785901097570

Price is "List Price" and may be subject to a trade discount – check with your local distributor or retailer for actual price.

Disclaimer: This documentation is not intended as a substitute for and is not to be used for determining suitability or reliability of these products for specific user applications

Returnability	Yes
Country of origin	US

Packing Units

Unit Type of Package 1	PCE
Nbr. of units in pkg.	1
Package 1 Height	3.40 in (8.636 cm)
Package 1 Width	5.90 in (14.986 cm)
Package 1 Length	8.80 in (22.352 cm)
Package weight(Lbs)	3.860 lb(US) (1.751 kg)

Contractual warranty

Warranty	18 months
----------	-----------



Environmental Data

Schneider Electric aims to achieve Net Zero status by 2050 through supply chain partnerships, lower impact materials, and circularity via our ongoing “Use Better, Use Longer, Use Again” campaign to extend product lifetimes and recyclability.

[Environmental Data explained >](#)

[How we assess product sustainability >](#)

Use Better

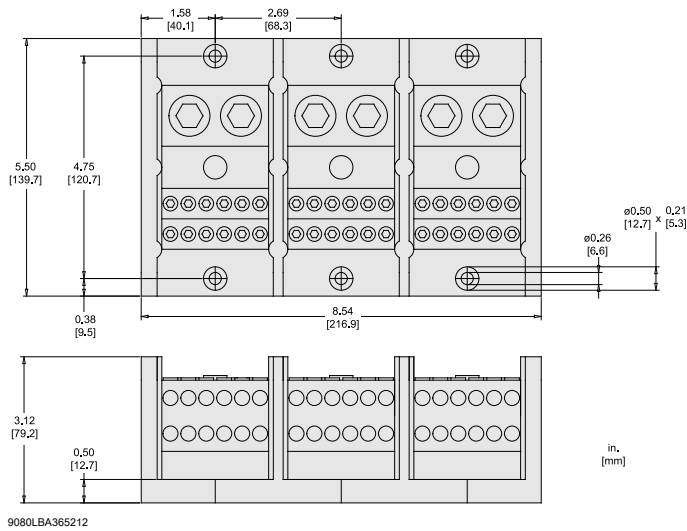
Materials and Substances	
Packaging made with recycled cardboard	Yes
Packaging without single use plastic	No
EU RoHS Directive	Compliant
REACH Regulation	REACH Declaration
California proposition 65	WARNING: This product can expose you to chemicals including: Lead and lead compounds, which is known to the State of California to cause cancer and birth defects or other reproductive harm. For more information go to www.P65Warnings.ca.gov

Use Again

Repack and remanufacture	
Circularity Profile	No need of specific recycling operations
Take-back	No

Technical Illustration

Dimensions



9080LBA365212