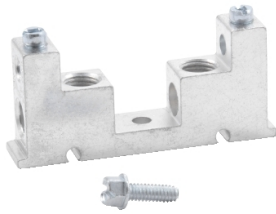


# Product data sheet

Specifications

**SQUARE D**



## Safety switch accessory, heavy duty, equipment grounding kit, 600V, 60A

GTK0610

**Product availability: Stock - Normally stocked in distribution facility**

### Main

Range of Product	Square D
Product or Component Type	Safety switch grounding bar
Series name	Heavy duty

### Complementary

Line Rated Current	60 A F1 60 A F3 60 A F5 60 A F7 100 A F2 100 A F7
AWG gauge	AWG 2 copper or aluminium
Width	3.180 in (80.772 mm)
Height	1.405 in (35.687 mm)
Depth	0.625 in (15.875 mm)
Tightening torque	20 lbf.in (2.3 N.m) (AWG 14...AWG 10) 25 lbf.in (2.8 N.m) (AWG 8) 35 lbf.in (4.0 N.m) (AWG 6...AWG 4) 50 lbf.in (5.6 N.m) (AWG 3...AWG 1/0)

### Ordering and shipping details

Category	US10DE100058
Discount Schedule	0DE1
GTIN	785901751380
Returnability	Yes
Country of origin	US

### Packing Units

Unit Type of Package 1	PCE
Nbr. of units in pkg.	1
Package 1 Height	1.00 in (2.540 cm)
Package 1 Width	3.80 in (9.652 cm)
Package 1 Length	3.90 in (9.906 cm)
Package weight(Lbs)	2.400 oz (68.039 g)
Unit Type of Package 2	CAR
Number of Units in Package 2	5

Price is "List Price" and may be subject to a trade discount – check with your local distributor or retailer for actual price.

<b>Package 2 Height</b>	3.80 in (9.652 cm)
<b>Package 2 Width</b>	4.40 in (11.176 cm)
<b>Package 2 Length</b>	5.40 in (13.716 cm)
<b>Package 2 Weight</b>	14.880 oz (421.841 g)
<b>Unit Type of Package 3</b>	PAL
<b>Number of Units in Package 3</b>	2340
<b>Package 3 Height</b>	40.00 in (101.600 cm)
<b>Package 3 Width</b>	40.00 in (101.600 cm)
<b>Package 3 Length</b>	48.00 in (121.920 cm)
<b>Package 3 Weight</b>	436.000 lb(US) (197.766 kg)

## Contractual warranty

<b>Warranty</b>	18 months
-----------------	-----------


## Environmental Data

Schneider Electric aims to achieve Net Zero status by 2050 through supply chain partnerships, lower impact materials, and circularity via our ongoing “Use Better, Use Longer, Use Again” campaign to extend product lifetimes and recyclability.


[Environmental Data explained >](#)

[How we assess product sustainability >](#)

### Use Better

 <b>Materials and Substances</b>	
Packaging made with recycled cardboard	Yes
Packaging without single use plastic	No
<a href="#">EU RoHS Directive</a>	Compliant with Exemptions
REACH Regulation	<a href="#">REACH Declaration</a>
California proposition 65	<b>WARNING: This product can expose you to chemicals including: Lead and lead compounds, which is known to the State of California to cause cancer and birth defects or other reproductive harm. For more information go to <a href="http://www.P65Warnings.ca.gov">www.P65Warnings.ca.gov</a></b>

### Use Again

 <b>Repack and remanufacture</b>	
Circularity Profile	No need of specific recycling operations
Take-back	No