

Product data sheet

Specifications

SQUARE D



Load center, Homeline, 1 phase, 40 spaces, 80 circuits, 200A convertible main breaker, PoN, NEMA1, value pack

HOM4080M200PCVP

Product availability: Stock - Normally stocked in distribution facility

Main

Product Type	Load Center
Marketing Trade Name	Homeline
Load Center Type	PoN Convertible Mains (breaker)
Rated Current	200 A
Number of Spaces	40
Maximum Number of Single Pole Circuits	80
Enclosure Rating	NEMA 1 indoor enclosure
Cover Type	Combination flush/surface cover
Electrical Connection	Lugs
Provided Equipment	Circuit-breaker 1) 2P 200 A 120/240 V CA main supply ready assembled Circuit-breaker 3) 1P 20 A 120/240 V CA Circuit-breaker 2) 2P 30 A 120/240 V CA

Complementary

Max Short Circuit Current Rating	22 kA
Maximum Number of Tandem Breakers	40
Number of Phases	1 phase 3 wires
Voltage Rating	120/240 V AC
Wire Size	AWG 4...250 kcmil aluminium/copper
Ground Bar	Grounding bar (ordered separately)
Busbar Material	Tin plated aluminium: busbar
Enclosure Material	Welded sheet steel
Surface Finish	Baked enamel Gray
Box Number	12
Bus Rated Current	225.0 A
Height	39.4 in (1000 mm)
Width	14.3 in (362 mm)
Depth	3.7 in (95 mm)

Environment

Ambient Air Temperature for Operation	23 °F (-5 °C) 104 °F (40 °C)
---------------------------------------	---------------------------------

Price is "List Price" and may be subject to a trade discount – check with your local distributor or retailer for actual price.

Disclaimer: This documentation is not intended as a substitute for and is not to be used for determining suitability or reliability of these products for specific user applications

Product Certifications	UL listed file E-6294
------------------------	-----------------------

Ordering and shipping details

Category	US1DE3C00185
Discount Schedule	DE3C
GTIN	785901977513
Returnability	Yes
Country of origin	US

Packing Units

Unit Type of Package 1	PCE
Nbr. of units in pkg.	1
Package 1 Height	5.25 in (13.34 cm)
Package 1 Width	15.81 in (40.16 cm)
Package 1 Length	41.06 in (104.29 cm)
Package weight(Lbs)	39.701 lb(US) (18.008 kg)
Unit Type of Package 2	PAL
Number of Units in Package 2	18
Package 2 Height	40.00 in (101.6 cm)
Package 2 Width	40.00 in (101.6 cm)
Package 2 Length	48.00 in (121.92 cm)
Package 2 Weight	670.0008 lb(US) (303.907 kg)

Environmental Data

Schneider Electric aims to achieve Net Zero status by 2050 through supply chain partnerships, lower impact materials, and circularity via our ongoing “Use Better, Use Longer, Use Again” campaign to extend product lifetimes and recyclability.

[Environmental Data explained >](#)

[How we assess product sustainability >](#)

Environmental footprint	
Carbon footprint (kg CO2 eq, Total Life cycle)	94
Environmental Disclosure	Product Environmental Profile

Use Better

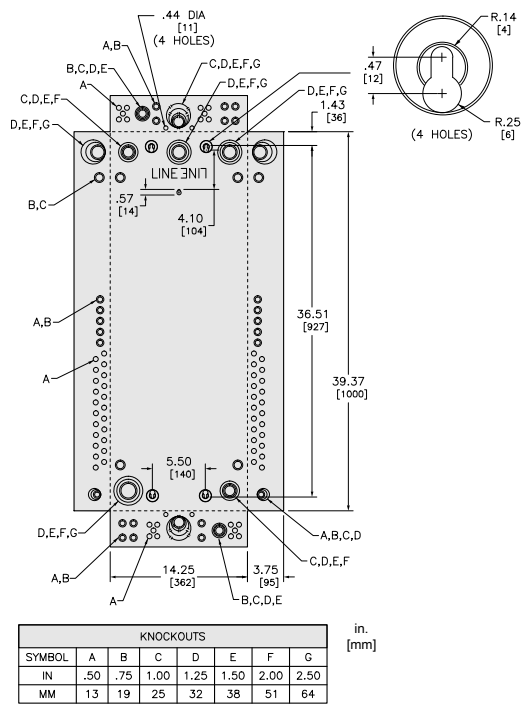
Materials and Substances	
Packaging made with recycled cardboard	No
Packaging without single use plastic	No
EU RoHS Directive	Under investigation
REACH Regulation	REACH Declaration
California proposition 65	WARNING: This product can expose you to chemicals including: Lead and lead compounds, which is known to the State of California to cause cancer and birth defects or other reproductive harm. For more information go to www.P65Warnings.ca.gov

Use Again

Repack and remanufacture	
Circularity Profile	No need of specific recycling operations
Take-back	No

Technical Illustration

Dimensions



All dimensions are approximate. Refer to technical drawings and documents.

Technical Illustration

Wiring diagram

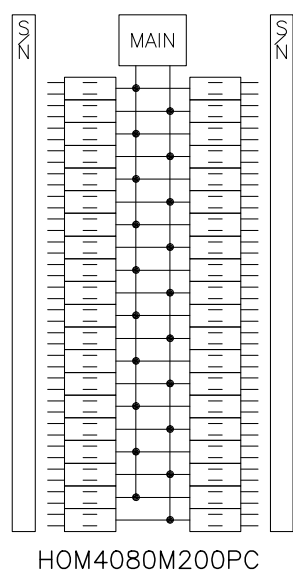
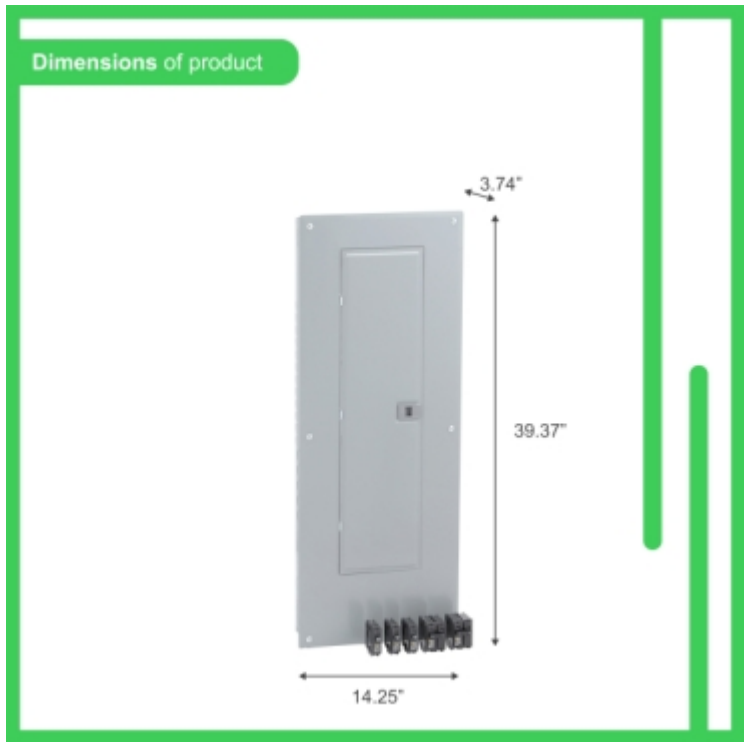


Image of product / Alternate images

Alternative



200 A

40 Spaces

40 Espacios

80 Circuits

80 Circuitos

Main Breaker

Interruptor Principal

Indoor

Interior

Bus Bar Rating /
Capacidad de Barra
de conexión : 225A
max.
120/240 V~ Max., 1Ø,
50/60 Hz.

INCLUDES INCLUIDOS

x3

HOM120

x2

HOM230

Surface / Flush

Sobreponer / Empotrar

39.72 lbs / 18.02 kg

W14.2" x H39.4" x D3.8"

6

Life Is On | Schneider Electric

Jul 22, 2025