

Product data sheet

Specifications

SQUARE D



Meter center, MP Meter-Pak, 4 sockets, no bypass, 4 jaws, 400A bus, 125A max breaker rating, ringed

MP44125

Product availability: Stock - Normally stocked in distribution facility

Main

| | |
|-------------------------|--------------|
| Product | Meter Center |
| Socket Rating | 125 A |
| Main Type | Main Lugs |
| Number of Jaws | 4 |
| Number of Meter Sockets | 4 |
| Socket Type | Ringed |

Complementary

| | |
|------------------------|---|
| Main Rating | 400 A |
| Bus Rating | 400 A |
| Certifications | UL Listed |
| Type | Meter-Pak |
| Busbar Material | Aluminium: busbar |
| Bypass Type | No bypass |
| Enclosure Material | Steel |
| Enclosure Rating | NEMA 3R |
| Maximum Voltage Rating | 120/240 V AC |
| Mounting | Surface |
| Phase | 1 phase |
| Service Feed Location | UG OH |
| Wire Size | AWG 1/0...600 kcmil 1 aluminium AWG 1/0...600 kcmil 1 copper |
| Wire Configuration | 3-wire |
| Height | 48.12 in (1222.25 mm) |
| Width | 24.34 in (618.24 mm) |
| Depth | 7.28 in (184.91 mm) |

Ordering and shipping details

| | |
|-------------------|--------------|
| Category | US10DE400021 |
| Discount Schedule | 0DE4 |

Price is "List Price" and may be subject to a trade discount – check with your local distributor or retailer for actual price.

| | |
|--------------------------|--------------|
| GTIN | 785901001805 |
| Returnability | Yes |
| Country of origin | MX |

Packing Units

| | |
|-------------------------------------|------------------------------|
| Unit Type of Package 1 | PCE |
| Nbr. of units in pkg. | 1 |
| Package 1 Height | 8.50 in (21.590 cm) |
| Package 1 Width | 24.70 in (62.738 cm) |
| Package 1 Length | 49.30 in (125.222 cm) |
| Package weight(Lbs) | 89.860 lb(US) (40.760 kg) |
| Unit Type of Package 2 | PAL |
| Number of Units in Package 2 | 6 |
| Package 2 Height | 40.00 in (101.600 cm) |
| Package 2 Width | 42.00 in (106.680 cm) |
| Package 2 Length | 60.00 in (152.400 cm) |
| Package 2 Weight | 540.0007 lb(US) (244.940 kg) |

Contractual warranty

| | |
|-----------------|-----------|
| Warranty | 18 months |
|-----------------|-----------|

Environmental Data

Schneider Electric aims to achieve Net Zero status by 2050 through supply chain partnerships, lower impact materials, and circularity via our ongoing “Use Better, Use Longer, Use Again” campaign to extend product lifetimes and recyclability.

[Environmental Data explained >](#)

[How we assess product sustainability >](#)

Environmental footprint

Carbon footprint (kg CO2 eq, Total Life cycle) 183

Environmental Disclosure [Product Environmental Profile](#)

Use Better

Materials and Substances

Packaging made with recycled cardboard No

Packaging without single use plastic No

[EU RoHS Directive](#) Compliant

REACH Regulation [REACH Declaration](#)

California proposition 65 **WARNING:** This product can expose you to chemicals including: Lead and lead compounds, which is known to the State of California to cause cancer and birth defects or other reproductive harm. For more information go to www.P65Warnings.ca.gov

Use Again

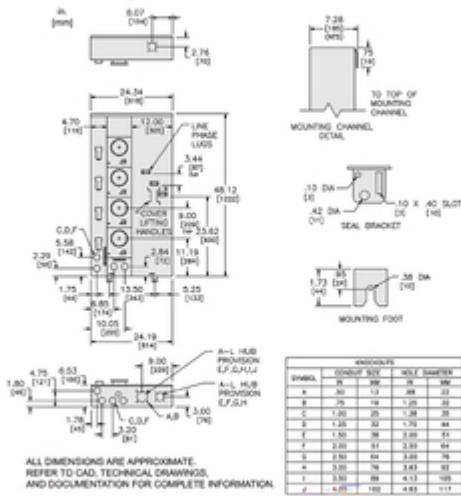
Repack and remanufacture

Circularity Profile No need of specific recycling operations

Take-back No

Technical Illustration

Dimensions



Technical Illustration

Wiring diagram

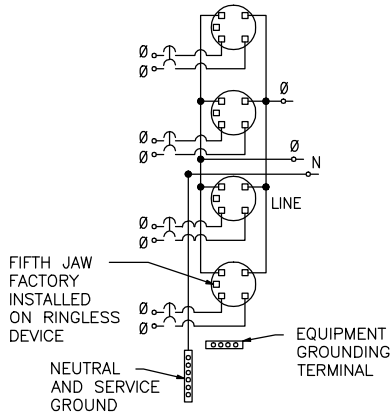


Image of product / Alternate images

Alternative

