

Product data sheet

Specifications

SQUARE D



Load center, QO, 3 phase, 18 spaces, 18 circuits, 200A fixed main lugs, NEMA3R, gnd bar

QO318L200GRB

Product availability: Stock - Normally stocked in distribution facility

Main

Marketing Trade Name	QO
Product Type	Load Center
Cover Type	Surface cover

Complementary

Tightening Torque	Main lugs 250 lb.in, AWG 4...250 kcmil, aluminium/copper
PoN Convertible Mains (lugs)	Fixed Mains (lugs)
Rated Current	200 A
Number of Spaces	18
Max Short Circuit Current Rating	65 kA
Maximum Number of Single Pole Circuits	18
Maximum Number of Tandem Breakers	0
Number of Phases	3 phase 4 wires 3 phase 3 wires
Voltage Rating	208Y/120 V AC 240/120 V delta AC 240 V delta AC
Wire Size	AWG 6...300 kcmil aluminium/copper
Ground Bar	Grounding bar included (not installed)
Electrical Connection	Lugs
Busbar Material	Tin plated copper: busbar
Enclosure Material	Welded galvanized steel
Surface Finish	Baked enamel Gray
Box Number	6R
Height	29.8 in (758 mm)
Width	14.8 in (375 mm)

Environment

Enclosure Rating	NEMA 3R weatherproof enclosure
Ambient Air Temperature for Operation	23 °F (-5 °C) 104 °F (40 °C)
Product Certifications	UL Listed

Price is "List Price" and may be subject to a trade discount ♦♦♦ check with your local distributor or retailer for actual price.

Ordering and shipping details

Category	US10DE300017
Discount Schedule	0DE3
GTIN	785901295457
Returnability	Yes
Country of origin	US

Packing Units

Unit Type of Package 1	PCE
Nbr. of units in pkg.	1
Package 1 Height	31.50 in (80.010 cm)
Package 1 Width	4.90 in (12.446 cm)
Package 1 Length	15.50 in (39.370 cm)
Package weight(Lbs)	31.881 lb(US) (14.461 kg)
Unit Type of Package 2	PAL
Number of Units in Package 2	21
Package 2 Height	40.00 in (101.600 cm)
Package 2 Width	40.00 in (101.600 cm)
Package 2 Length	48.00 in (121.920 cm)
Package 2 Weight	679.00007 lb(US) (307.989 kg)

Contractual warranty

Warranty	18 months
----------	-----------

Schneider Electric aims to achieve Net Zero status by 2050 through supply chain partnerships, lower impact materials, and circularity via our ongoing “Use Better, Use Longer, Use Again” campaign to extend product lifetimes and recyclability.

[Environmental Data explained >](#)

[How we assess product sustainability >](#)

Environmental footprint	
Environmental Disclosure	Product Environmental Profile

Use Better

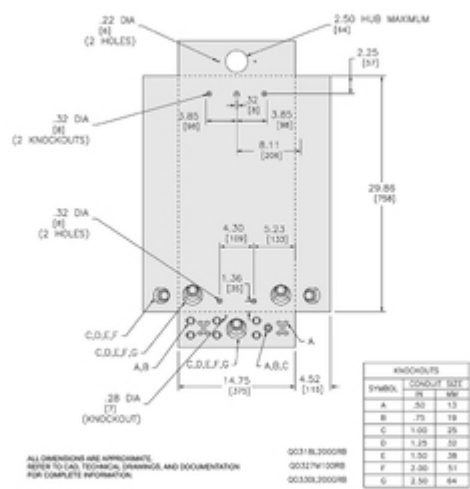
Materials and Substances	
Packaging made with recycled cardboard	No
Packaging without single use plastic	No
EU RoHS Directive	Under investigation
REACH Regulation	REACH Declaration
California proposition 65	WARNING: This product can expose you to chemicals including: Lead and lead compounds, which is known to the State of California to cause cancer and birth defects or other reproductive harm. For more information go to www.P65Warnings.ca.gov

Use Again

Repack and remanufacture	
Circularity Profile	No need of specific recycling operations
Take-back	No

Technical Illustration

Dimensions



Technical Illustration

Wiring diagram

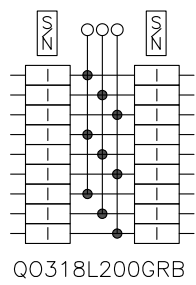


Image of product / Alternate images

Alternative

