

Product data sheet

Specifications

SQUARE D



Load center, QO, 1 phase, 8 spaces, 16 circuits, 100A fixed main lugs, NEMA3R, Cu bus

QO816L100RBCU

Product availability: Stock - Normally stocked in distribution facility

Main

Marketing Trade Name	QO
Product Type	Load Center
Cover Type	Surface cover

Complementary

Tightening Torque	Main lugs 50 lb.in, AWG 8, aluminium/copper Main lugs 50 lb.in, AWG 6...AWG 1/0, aluminium/copper
PoN Convertible Mains (lugs)	Fixed Mains (lugs)
Rated Current	100 A
Number of Spaces	8
Max Short Circuit Current Rating	10 kA
Maximum Number of Single Pole Circuits	16
Maximum Number of Tandem Breakers	8
Number of Phases	1 phase 3 wires
Voltage Rating	120/240 V AC
Wire Size	AWG 8...AWG 1 aluminium/copper
Ground Bar	Grounding bar (ordered separately)
Electrical Connection	Lugs
Busbar Material	Tin plated copper: busbar
Enclosure Material	Welded galvanized steel
Surface Finish	Baked enamel Gray
Box Number	2R
Height	12.4 in (316 mm)
Width	8.9 in (226 mm)
Depth	4.02 in (102 mm)
Net Weight	9.259 lb(US) (4.200 kg)

Environment

Enclosure Rating	NEMA 3R weatherproof enclosure
Ambient Air Temperature for Operation	23 °F (-5 °C) 104 °F (40 °C)
Product Certifications	UL Listed

Price is "List Price" and may be subject to a trade discount – check with your local distributor or retailer for actual price.

Disclaimer: This documentation is not intended as a substitute for and is not to be used for determining suitability or reliability of these products for specific user applications

Ordering and shipping details

Category	US1DE3A00101
Discount Schedule	DE3A
GTIN	785901626404
Returnability	Yes
Country of origin	MX

Packing Units

Unit Type of Package 1	PCE
Nbr. of units in pkg.	1
Package 1 Height	4.90 in (12.446 cm)
Package 1 Width	10.20 in (25.908 cm)
Package 1 Length	14.10 in (35.814 cm)
Package weight(Lbs)	10.099 lb(US) (4.581 kg)
Unit Type of Package 2	PAL
Number of Units in Package 2	80
Package 2 Height	40.00 in (101.600 cm)
Package 2 Width	40.00 in (101.600 cm)
Package 2 Length	48.00 in (121.920 cm)
Package 2 Weight	787.999 lb(US) (357.430 kg)

Contractual warranty

Warranty	18 months
----------	-----------



Environmental Data

Schneider Electric aims to achieve Net Zero status by 2050 through supply chain partnerships, lower impact materials, and circularity via our ongoing “Use Better, Use Longer, Use Again” campaign to extend product lifetimes and recyclability.

[Environmental Data explained >](#)

[How we assess product sustainability >](#)

Use Better

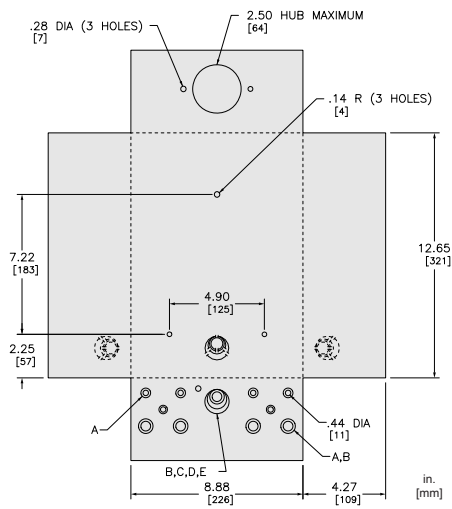
Materials and Substances	
Packaging made with recycled cardboard	Yes
Packaging without single use plastic	No
EU RoHS Directive	Under investigation
RECh Regulation	RECh Declaration
California proposition 65	WARNING: This product can expose you to chemicals including: Lead and lead compounds, which is known to the State of California to cause cancer and birth defects or other reproductive harm. For more information go to www.P65Warnings.ca.gov

Use Again

Repack and remanufacture	
Circularity Profile	No need of specific recycling operations
Take-back	No

Technical Illustration

Dimensions

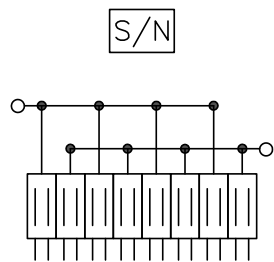


KNOCKOUTS					
SYMBOL	A	B	C	D	E
IN	.50	.75	1.00	1.25	1.50
MM	13	19	25	32	38

ALL DIMENSIONS ARE APPROXIMATE.
ALSO SEE TECHNICAL DRAWINGS AND DOCUMENTATION.

Technical Illustration

Wiring diagram



QO816L100RB
QO816L100RBCU