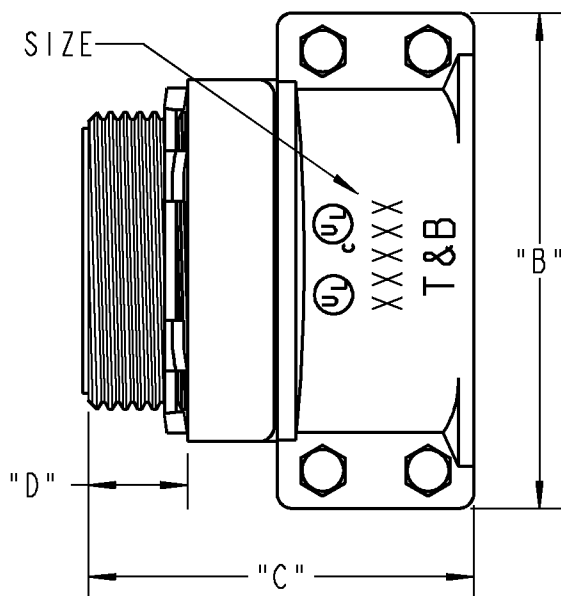
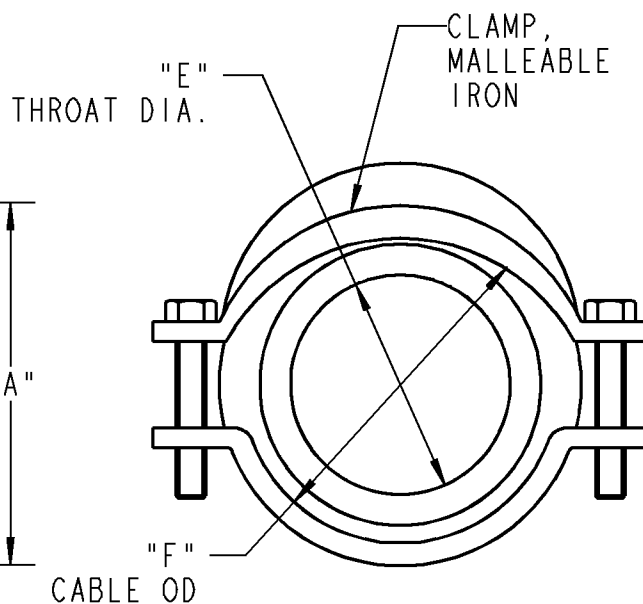
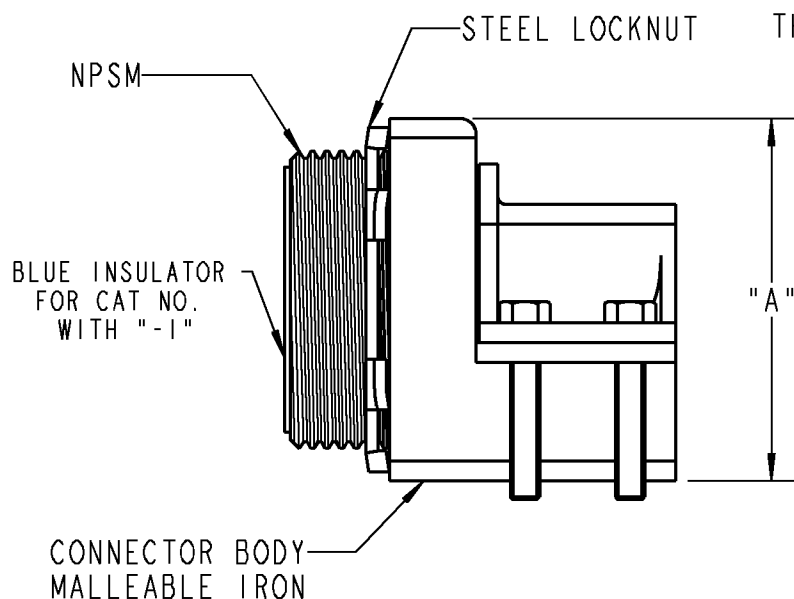


TRADE SIZE



NOTES:

ALL DIMENSIONS ARE APPROXIMATE.  
 FINISH: ZINC PLATE  
 MATERIAL: MALLEABLE IRON  
 LOCKNUT MATERIAL: STEEL  
 MALE HUB THREADS: NPSM  
 UL STANDARD: 514B  
 LISTED: UL & cUL  
 USE: LISTED ONLY FOR FMC.  
 NO. OF SCREWS: 4



CLAMP SHOWN IN OPEN POSITION

T&B CAT. NO.	TRADE SIZE	"A"	"B"	"C"	"D"	"E"	"F"	NPSM	BLUE INSULATOR
278-TB	3 1/2"	4.74	6.62	5.20	1.32	3.425	3.200/4.370	3 1/2 - 8NPSM	NO
278-I-TB	3 1/2"	4.74	6.62	5.20	1.32	3.425	3.200/4.370	3 1/2 - 8NPSM	YES
281-TB	4"	5.10	7.23	5.72	1.61	3.915	3.500/4.600	4 - 8NPSM	NO
281-I-TB	4"	5.10	7.23	5.72	1.61	3.915	3.500/4.600	4 - 8NPSM	YES

GENERAL NOTES

- ALL DIMENSIONS ARE FOR REFERENCE ONLY.
- DIMENSIONS IN BRACKETS [ ] ARE IN METRIC UNITS.

REVISIONS

- |   |   |
|---|---|
| 1 | SEE ERN ( 2009700 )<br>FOR APPROVAL SIGNATURES<br>& RELEASE DATE.<br>PROJECT NO: RM401189 |
|---|---|

DESCRIPTION:

**STRAIGHT SQUEEZE CONNECTORS**  
**TRADE SIZES 3 1/2" & 4"**

ORIGINAL PROJECT NO / ( ERN NO )

RM401189 / ( 2008334 )

SHEET NO:

1 OF 1

REV. NO:

1

DRAWING NO:

WSD-000350

**Thomas & Betts**  
 www.tnb.com