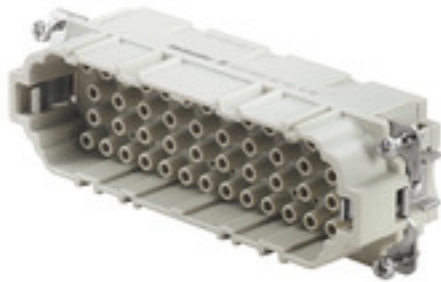


HDC insert HDC HEE 46 MC

Weidmüller Interface GmbH & Co. KG
 Klingenbergstraße 26
 D-32758 Detmold
 Germany
 Fon: +49 5231 14-0
 Fax: +49 5231 14-292083
 www.weidmueller.com



The HEE series features high-density contacts and is designed based on the established HE inserts.

The wire connection level is designed as a crimp contact. The established crimp connection has been used as a standard for decades. Crimp contacts are not delivered with the inserts.

Number of poles: **46**

Rated current: **16 A**

Rated voltage: **500 V**

Nominal voltage acc. to UL/CSA: **600 V AC/DC**

Crimp connection

General ordering data

| | |
|------------|--|
| Type | HDC HEE 46 MC |
| Order No. | 1826770000 |
| Version | HDC insert, Pin, 500 V, 16 A, Number of poles: 46, Crimp connection, Size: 8 |
| GTIN (EAN) | 4032248330171 |
| Qty. | 1 pc(s). |

**HDC insert
HDC HEE 46 MC**

Weidmüller Interface GmbH & Co. KG
 Klingenbergstraße 26
 D-32758 Detmold
 Germany
 Fon: +49 5231 14-0
 Fax: +49 5231 14-292083
 www.weidmueller.com

Technical data**Dimensions and weights**

| | | | |
|------------|--------|-----------------|------------|
| Width | 34 mm | Width (inches) | 1.339 inch |
| Height | 33 mm | Height (inches) | 1.299 inch |
| Depth | 111 mm | Depth (inches) | 4.37 inch |
| Net weight | 72 g | | |

Temperatures

| | |
|-------------------|-------------------|
| Limit temperature | -40 °C ... 125 °C |
|-------------------|-------------------|

Dimensions

| | | | |
|----------------|-------|-------------------|--------|
| Height of plug | 33 mm | Total length base | 111 mm |
|----------------|-------|-------------------|--------|

General data

| | | | |
|------------------------------|-------------------|--------------------------------------|---|
| Conductor cross-section | 4 mm ² | Insulating material | PC glass-fibre reinforced (UL-listed and railway-certified) |
| Insulating material group | IIIa | Insulation strength | 10 ¹⁰ Ω |
| Number of poles | 46 | Plugging cycles, gold | ≥ 500 |
| Plugging cycles, silver | ≥ 500 | Pollution severity | 3 |
| Rated current (DIN EN 61984) | 16 A | Rated impulse voltage (DIN EN 61984) | 6 kV |
| Rated voltage (DIN EN 61984) | 500 V | Rated voltage according to UL/CSA | 600 V AC/DC |
| Series | HEE | Size | 8 |
| Type | Pin | UL 94 flammability rating | V-0 |
| Volume resistance | ≤ 2mΩ | | |

Connection data

| | | | |
|---|---------------------|---|-------------------|
| Conductor cross-section, min. | 0.5 mm ² | Conductor cross-section, max. | 4 mm ² |
| Wire connection cross section AWG, min. | AWG 20 | Wire connection cross section AWG, max. | AWG 12 |

Design

| | | | |
|-----------------------|------------|--------------------|------------------|
| Product family | HDC insert | Product type | Insert |
| Type | Pin | Type of connection | Crimp connection |
| Blade size, crosshead | size PH1 | | |

General descriptions

| | | | |
|-----------------|----|------|---|
| Number of poles | 46 | Size | 8 |
|-----------------|----|------|---|

Material

| | | | |
|---------------------------|---|--------|-------|
| Insulating material | PC glass-fibre reinforced (UL-listed and railway-certified) | Colour | beige |
| UL 94 flammability rating | V-0 | | |

**HDC insert
HDC HEE 46 MC**

Weidmüller Interface GmbH & Co. KG
 Klingenbergstraße 26
 D-32758 Detmold
 Germany
 Fon: +49 5231 14-0
 Fax: +49 5231 14-292083
 www.weidmueller.com

Technical data**Connection data PE**

| | | | |
|---|---------------------|---|---------------------|
| Blade size, crosshead | size PH1 | Blade size, slotted (PE connection) | SD 0.8 x 4.0 |
| Connection type PE | Screw connection | Fixing screw | M 4 |
| Rated cross-section | 4 mm ² | Stripping length PE connection | 10 mm |
| Tightening torque, max. PE connection | 1.5 Nm | Tightening torque, min. PE connection | 1.2 Nm |
| Wire connection cross section, finely stranded, max. | 4 mm ² | Wire connection cross-section, finely stranded with wire-end ferrules DIN 46228/4, max. | 4 mm ² |
| Wire connection cross-section, finely stranded with wire-end ferrules DIN 46228/4, min. | 0.5 mm ² | Wire connection cross-section, finely stranded, min. | 0.5 mm ² |
| Wire cross section, AWG (PE), max. | AWG 12 | Wire cross section, AWG (PE), min. | AWG 20 |
| Wire cross-section, solid, max. | 4 mm ² | Wire cross-section, solid, min. | 0.5 mm ² |

Version

| | | | |
|---|---------------------|---|---------------------|
| Conductor cross-section, max. | 4 mm ² | Conductor cross-section, min. | 0.5 mm ² |
| Size | 8 | Stripping length, rated connection | 7.5 mm |
| Type of connection | Crimp connection | Volume resistance | ≤ 2mΩ |
| Wire connection cross section AWG, max. | AWG 12 | Wire connection cross section AWG, min. | AWG 20 |
| Wire connection cross section, finely stranded, max. | 4 mm ² | Wire connection cross-section, finely stranded with wire-end ferrules DIN 46228/4, max. | 4 mm ² |
| Wire connection cross-section, finely stranded with wire-end ferrules DIN 46228/4, min. | 0.5 mm ² | Wire connection cross-section, finely stranded, min. | 0.5 mm ² |
| Wire cross-section, solid, max. | 4 mm ² | Wire cross-section, solid, min. | 0.5 mm ² |

Classifications

| | | | |
|-------------|-------------|------------|-------------|
| ETIM 6.0 | EC000438 | ETIM 7.0 | EC000438 |
| eClass 9.0 | 27-44-02-05 | eClass 9.1 | 27-44-02-05 |
| eClass 10.0 | 27-44-02-05 | UNSPSC | 30-21-18-01 |

Approvals

Approvals



ROHS

Conform

Downloads

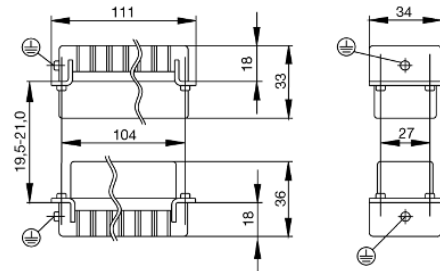
| | |
|--------------------|---|
| Brochure/Catalogue | CAT 3 HDC 17/18 EN FL FIELDWIRING EN |
| Engineering Data | EPLAN, WSCAD, Zuken E3.S |
| Engineering Data | STEP |

Data sheet

**HDC insert
HDC HEE 46 MC**

Weidmüller Interface GmbH & Co. KG
Klingenbergstraße 26
D-32758 Detmold
Germany
Fon: +49 5231 14-0
Fax: +49 5231 14-292083
www.weidmueller.com

Drawings



Tightening torques and screwing tools

| Screw size | Connector type | Dia. tightening torque in Nm | Recommended blade inserts and AF size for hexagon socket | |
|---------------------------------------|---|---|--|-----------------------------------|
| M 2.5 | Signal contacts | | | |
| | S 6/6 | 0.5 - 0.55 | SD 0.6 x 3.5 mm or PZ0 | |
| | S 6/12 | 0.5 - 0.55 | SD 0.6 x 3.5 mm or PZ0 | |
| M 2.9 x 0.5 | Fastening screws | | | |
| | HQ 4/2 | 0.8 (plastic) / 1.1 (metal) | SD 0.6 x 3.5 mm or PH0 | |
| | HQ 8 | 0.8 (plastic) / 1.1 (metal) | SD 0.6 x 3.5 mm or PH0 | |
| | HQ 17 | 0.8 (plastic) / 1.1 (metal) | SD 0.6 x 3.5 mm or PH0 | |
| M 3 | Contact screws | | | |
| | HA 3 | 0.5 - 0.55 | SD 0.5 x 3.0 mm | |
| | HA 4 | 0.5 - 0.55 | SD 0.5 x 3.0 mm | |
| | HA 10 bis HA 48 | 0.5 - 0.55 | SD 0.6 x 3.5 mm or PH0 | |
| | HE | 0.5 - 0.55 | SD 0.6 x 3.5 mm or PZ0 | |
| | HVE | 0.5 - 0.55 | SD 0.6 x 3.5 mm or PZ0 | |
| | Signal contacts: | | | |
| | S 4/2 | 0.5 - 0.55 | SD 0.6 x 3.5 mm or PZ0 | |
| | S 4/8 | 0.5 - 0.55 | SD 0.6 x 3.5 mm or PZ0 | |
| | PE connection via female contact | | | |
| | S 4 | 0.5 - 0.8 | SD 0.6 x 3.5 mm | |
| | ConCept modular frame, metal | 0.5 - 0.55 | SD 0.6 x 3.5 mm | |
| | PE terminal | | | |
| | HQ 5 | 0.5 - 0.55 | SD 0.6 x 3.5 or 0.8 x 4 mm | |
| | HQ 7 | 0.5 - 0.55 | SD 0.6 x 3.5 or 0.8 x 4 mm | |
| | Fastening screws | 0.5 - 0.55 | SD 0.6 x 3.5 mm or PZ0 | |
| | Guide pin | 0.5 - 0.55 | SD 0.6 x 3.5 mm or PZ0 | |
| | Guide bush | 0.5 - 0.55 | SD 0.6 x 3.5 mm or PZ0 | |
| | Coding pins | 0.5 - 0.55 | SD 0.6 x 3.5 mm or PZ0 | |
| | M 4 | Contact screws | | |
| | | HSB | 1.2 - 1.5 | SD 0.6 x 3.5 or 0.8 x 4 mm or PZ1 |
| PE connection via male contact | | | | |
| S 4 | | 0.5 - 0.8 | SD 0.6 x 3.5 mm | |
| ConCept modular frame, metal | | 1.2 - 1.5 | SD 0.6 x 3.5 mm | |
| PE terminal | | | | |
| HA | | 1.2 - 1.5 | SD 0.6 x 3.5 or 0.8 x 4 mm or PH1 | |
| HE | | 1.2 - 1.5 | SD 0.6 x 3.5 or 0.8 x 4 mm or PH1 | |
| HEE | | 1.2 - 1.5 | SD 0.6 x 3.5 or 0.8 x 4 mm or PH1 | |
| HVE | | 1.2 - 1.5 | SD 0.6 x 3.5 or 0.8 x 4 mm or PH1 | |
| HD | | 1.2 - 1.5 | SD 0.6 x 3.5 or 0.8 x 4 mm or PZ1 | |
| HDD | | 1.2 - 1.5 | SD 0.6 x 3.5 or 0.8 x 4 mm or PZ1 | |
| S 6/6 (for signal contacts) | | 1.2 - 1.5 | 0.8 x 4 mm or PZ1 | |
| ConCept modular frame, plastic | | 1.2 - 1.5 | 0.8 x 4 mm or PZ1 | |
| M 5 | | PE terminal | | |
| | HSB | 2 - 2.5 | SD 1 x 5.5 mm or PZ2 | |
| | S 4/0 (Screw connection) | 2 - 2.5 | SD 1.2 x 6.5 mm or PH2 | |
| | S 4/0 (Axial screw connection) | 2 - 2.5 | SD 0.8 x 4 mm or PZ 2 | |
| | S 4/2 | 2 - 2.5 | SD 1.2 x 6.5 mm or PH2 | |
| | S 4/8 | 2 - 2.5 | SD 1.2 x 6.5 mm or PH2 | |
| | S 6/12 | 2 - 2.5 | SD 0.8 x 4 mm or PZ 2 | |
| | S 6/36 | 2 - 2.5 | SD 1.2 x 6.5 mm or PH2 | |
| | S 8/24 | 2 - 2.5 | SD 1.2 x 6.5 mm or PH2 | |
| | S 12/2 | 2 - 2.5 | SD 1.2 x 6.5 mm or PH2 | |
| | M 6 | Power contacts | | |
| S 4/0 (Screw connection) | | 1.2 (1.5 mm ²) / 2 (2.5 mm ²) / 3 (4-16 mm ²) | SD 0.8 x 4 mm | |
| S 4/2 | | 1.2 (1.5 mm ²) / 2 (2.5 mm ²) / 3 (4-16 mm ²) | SD 0.8 x 4 mm | |
| S 4/8 | | 1.2 (1.5 mm ²) / 2 (2.5 mm ²) / 3 (4-16 mm ²) | SD 0.8 x 4 mm | |
| M 7 x 0.75 | Power contacts | | | |
| | S 4 | 1.1 - 1.7 | SW 2 | |
| | S 6/6 (+ PE) | 6 - 8 | SW 4 | |
| M 8 x 0.75 | Power contacts | | | |
| | S 6/12 | 1.1 - 1.7 | SW 2 | |
| | S 8/0 (+ PE) | 6 (10-16 mm ²) - 7 (25 mm ²) | SW 4 | |
| M10 x 1 | Power contacts | | | |
| | S 4/0 (Axial connection) | 2 - 3 | SW 3 | |

Increasing the tightening torque does not improve the contact resistance. The stated torque settings offer optimal mechanical, thermal and electrical conditions. Exceeding the recommended values may even damage the conductor and terminal.