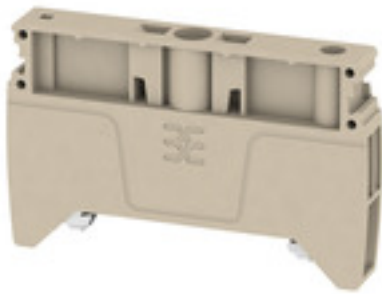


**A-series
AEB 35 SC/1**

Weidmüller Interface GmbH & Co. KG
Klingenbergstraße 26
D-32758 Detmold
Germany
Fon: +49 5231 14-0
Fax: +49 5231 14-292083
www.weidmueller.com

Product image**Spring connection with PUSH IN Technology**

The innovative PUSH IN technology reduces the amount of time you spend on wiring to a minimum. Direct insertion guarantees high conductor pull-out forces and simple handling for all conductor types.

General ordering data

Type	AEB 35 SC/1
Order No.	1991920000
Version	A-series, End bracket
GTIN (EAN)	4050118376722
Qty.	50 pc(s).

**A-series
AEB 35 SC/1**

Weidmüller Interface GmbH & Co. KG
 Klingenbergstraße 26
 D-32758 Detmold
 Germany
 Fon: +49 5231 14-0
 Fax: +49 5231 14-292083
 www.weidmueller.com

Technical data**Dimensions and weights**

Width	8 mm	Width (inches)	0.315 inch
Height	58 mm	Height (inches)	2.283 inch
Depth	36 mm	Depth (inches)	1.417 inch
Net weight	13.32 g		

Temperatures

Storage temperature, max.	40 °C	Storage temperature, min.	10 °C
Storage temperature	10 °C...40 °C	Continuous operating temp., min.	-60 °C
Continuous operating temp., max.	130 °C		

Material data

Material	WEMID GF 30	Colour	dark beige
UL 94 flammability rating	V-0		

System specifications

Version	For the terminals	Rail	TS 35
---------	-------------------	------	-------

Additional technical data

Installation advice	Rail	Interlock	for screw fixing
Open sides	closed	Snap-on	No
Type of mounting	when screwed in	With snap-in pegs	No

Classifications

ETIM 6.0	EC001041	ETIM 7.0	EC001041
eClass 9.0	27-14-11-35	eClass 9.1	27-14-11-35
eClass 10.0	27-14-11-35		

Approvals

ROHS	Conform
------	---------

Downloads

Brochure/Catalogue	CAT 1 TERM 16/17 EN
Engineering Data	EPLAN, WSCAD, Zuken E3.S
Engineering Data	STEP
Tender specification	Klippon® Connect 1991920000 EN Klippon® Connect 1991920000 DE
User Documentation	StorageConditionsTerminalBlocks