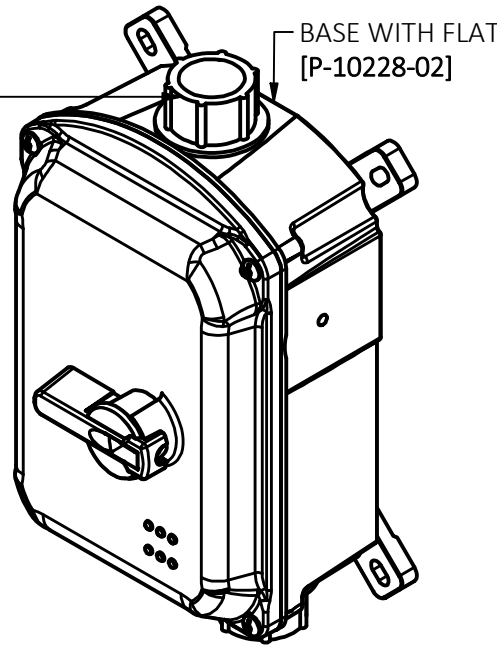
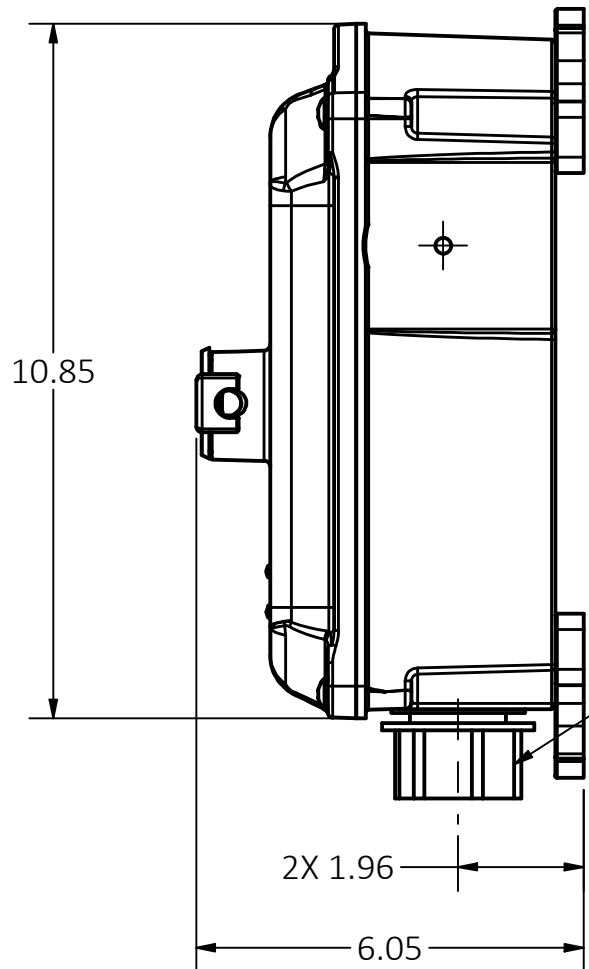
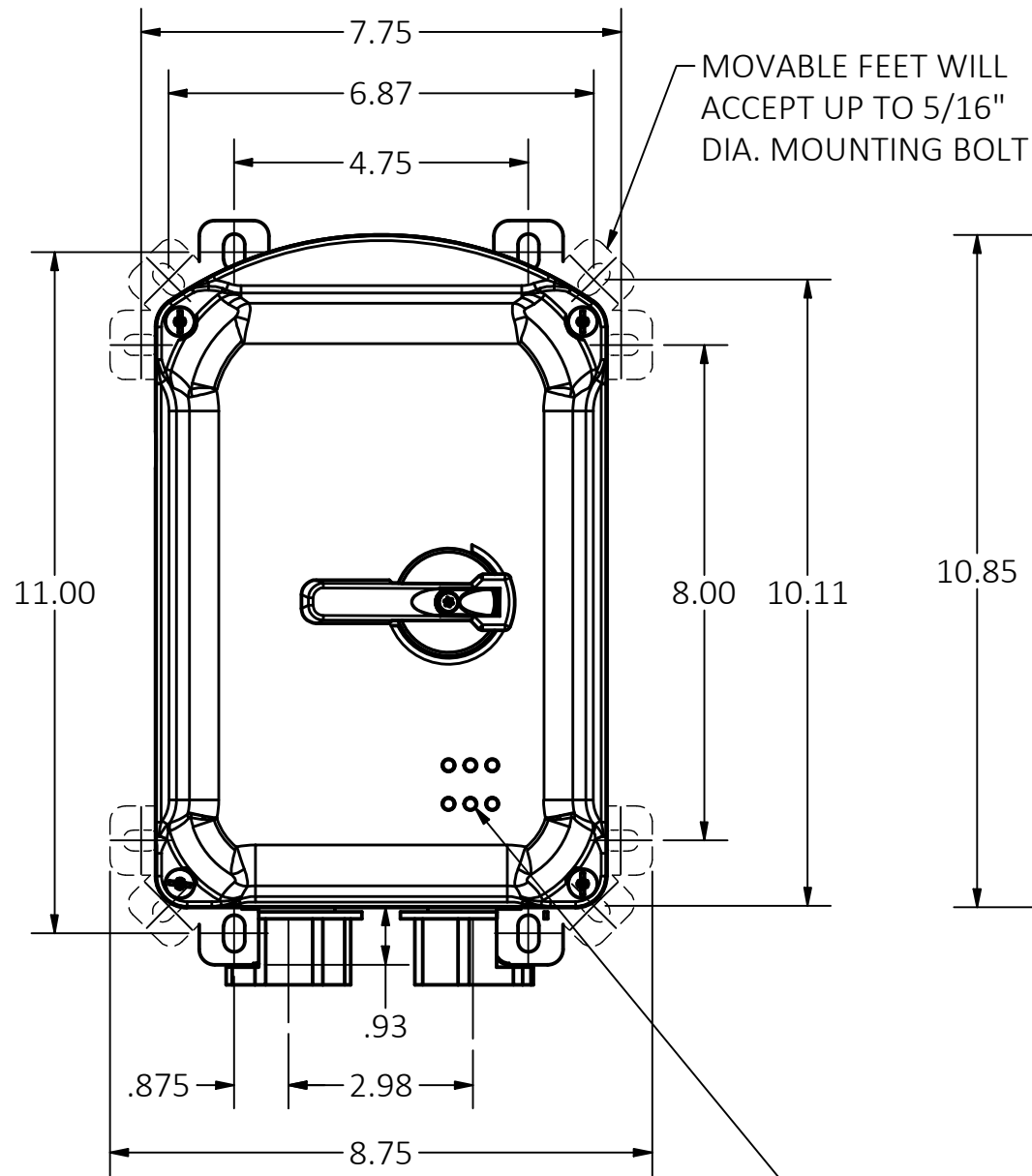
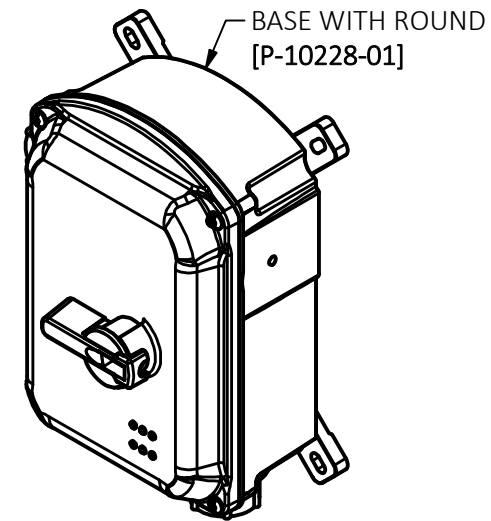


M-14733

1



CATALOG NO. HBLDS60TP/HBLDS100TP
HBLDS60TPAC/HBLDS100TPAC
(NOT SHOWN TO SCALE)

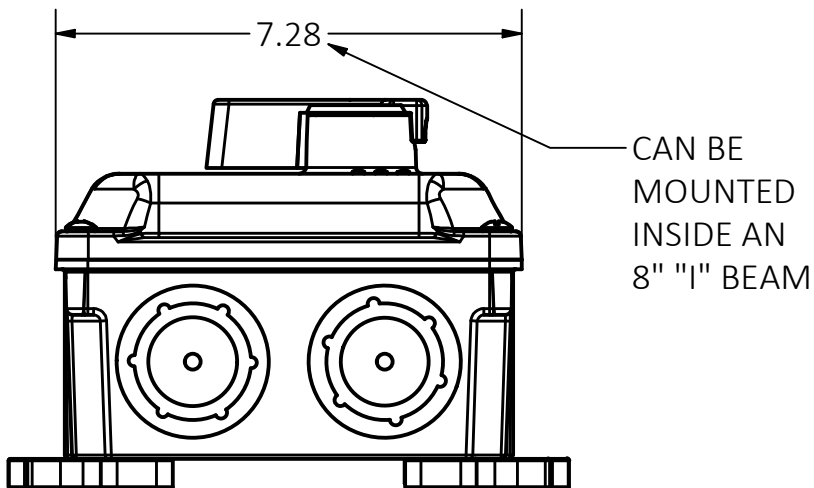


CATALOG NO. HBLDS60P/HBLDS100P
(NOT SHOWN TO SCALE)

NOTES UNLESS OTHERWISE SPECIFIED:

1. DIMENSIONS SHOWN ARE IN INCHES.
2. ENCLOSURE TYPE 4X, 12.
3. cULus LISTED.
4. NSF CERTIFIED AND IP69K RATING.

LED INDICATORS



CATALOG NO.'S	
HBLDS60P HBLDS60PAC (AUXILIARY CONTACT)	
60 AMP	600 VAC
7.5 HP (5.6 kw)	120 VAC 1 ϕ
15 HP (11.19 kw)	200-240 VAC 1 ϕ
30 HP (22.37 kw)	480 VAC 1 ϕ
30 HP (22.37 kw)	200-240 VAC 3 ϕ
50 HP (37.28 kw)	480 VAC 3 ϕ
50 HP (37.28 kw)	600 VAC 3 ϕ

CATALOG NO.'S	
HBLDS100P HBLDS100PAC (AUXILIARY CONTACT)	
100 AMP	600 VAC
7.5 HP (5.6 kw)	120 VAC 1 ϕ
15 HP (11.19 kw)	200-240 VAC 1 ϕ
30 HP (22.37 kw)	480 VAC 1 ϕ
30 HP (22.37 kw)	200-240 VAC 3 ϕ
50 HP (37.28 kw)	480 VAC 3 ϕ
50 HP (37.28 kw)	600 VAC 3 ϕ


LIST OF PARTS

DESCRIPTION	MATERIAL	FINISH
ALL EXTERNAL PLASTIC PARTS	UV STABILIZED POLYESTER BLEND	
ALL EXTERNAL SCREWS	STAINLESS STEEL	
THREADED HUB	DIE CAST	
INSULATED THROAT	ZINC	

1	INITIAL RELEASE PER DCN 240116036057	TAB	10/26/23
REV	DESCRIPTION	APP	DATE

THE DESIGN AND DIMENSIONS OF THE PRODUCT SHOWN ON THIS DRAWING ARE SUBJECT TO CHANGE WITHOUT NOTICE. DIMENSIONS ARE IN INCHES [mm].

TITLE
DIMENSION SHEET FOR
60A & 100A CIRCUIT LOCK™
DISCONNECT SWITCHES

		WIRING DEVICE-KELLEMS HUBBELL INCORPORATED SHELTON, CT	
TOLERANCES UNLESS OTHERWISE SPECIFIED .XX = ± .01 .XXX = ± .005 ANGLE TOL. ±2°		DR. BY VMK CHK. BY TAB	SCALE 1:3 DATE 10/9/23

DIMENSION SHEET FOR CAT. NO.
SEE TABLE

B

M-14733

1